



# EXTRACTOR COFFEE BREWER

## CBS-2041e

1 Gallon Brewer



## CBS 2040 Series

Our 1 gallon **CBS-2041e** single coffee brewer makes great-tasting coffee with the touch of a button. This unit comes complete with our patented Cascading Spray Dome™, which helps deliver a consistent, perfectly balanced cup of coffee every time. You can brew directly into our self-serve **LUXUS®** Thermal dispensers and serve hot, fresh, aromatic coffee for hours.

Shown with the 1.0 Gallon **LUXUS®** Thermal Dispenser (L3D-10). The 1.0 Gallon **LUXUS®** Thermal Server (L3S-10) is also available and both are sold separately.



**Cascading Spray Dome™** technology ensures perfect extraction of coffee flavor.

**Pulse-Brew System** delivers intermittent pulses of water to ensure even saturation of the coffee bed for enhanced extraction.



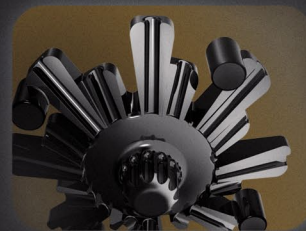
**Digital Interface** makes it easy to program and run brewer. Settings can be customized to your recipe.

**Pre-Wet Cycle** allows you to control the length of time water is in contact with the coffee before the brew cycle to ensure optimum flavor.



**Bypass Feature** redirects water directly into the dispenser, bypassing the coffee grounds in the brew basket, to provide your custom water-to-coffee ratio.

**Brew Time & Brew Volume** can be programmed separately to ensure a perfectly-balanced batch, no matter how much coffee you brew at once.



**Drip Delay** lets you set the time between the end of the brew cycle and the unlocking of the brew basket, for increased safety.

**FETCO**  
DRIVEN TO INNOVATION



## Water Specification

Water Inlet  
3/8 inch Male Flare

Minimum Flow Rate  
1 gpm [3.8 lpm]

Water Pressure  
20-75 psig [139-517 kPa]

## Electrical Configuration

Configuration Code	Heater Configuration	Voltage	Phase	Wires	KW	Electrical Connection	Max Amp Draw	Gallon[Liter]/Hour
<b>DOMESTIC &amp; CANADA</b>								
E41016 <sup>(1)</sup>	1 x 2.3 kW	120	1	2+G	2.4	5-20P	19.7	5.8 [22.0] <sup>(2)</sup>
	2 x 2.3 kW	120/208-240	1	3+G	3.6-4.7	Hardwired	17.1-19.7	9.0-11.8 [34.0-44.7] <sup>(2)</sup>
E41036 <sup>(1)</sup>	1 x 1.7 kW	120	1	2+G	1.8	5-20P	14.7	4.4 [16.7] <sup>(2)</sup>
	2 x 1.7 kW	120/208-240	1	3+G	2.7-3.5	Hardwired	12.8-14.7	6.7-8.8 [25.0-33.0] <sup>(2)</sup>
E41046 <sup>(1)</sup>	1 x 1.5 kW	120	1	2+G	1.6	5-15P	13.0	3.9 [14.8] <sup>(2)</sup>
	2 x 1.5 kW	120/208-240	1	3+G	2.4-3.1	Hardwired	11.3-13.0	6.1-7.7 [23.1-29.0] <sup>(2)</sup>
<b>EXPORT</b>								
E41026	1 x 3.0 kW	220-240	1	2+G	2.6-3.1	Country specific	12.0-13.0	6.4-7.7 [24.3-29.3] <sup>(2)</sup>

## Important

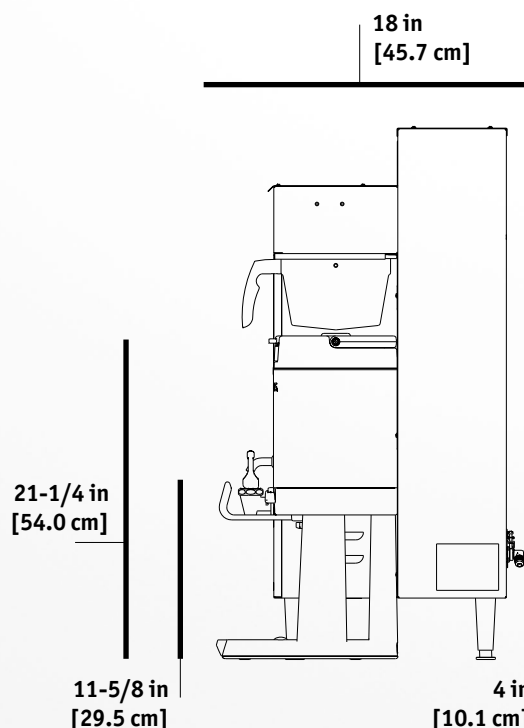
(1) Can be connected to 120 VAC (Factory Setting) or 120/208-240 VAC.

(2) Based on standard factory settings: 4.0 minute brew time; 0% prewet; 200°F water.

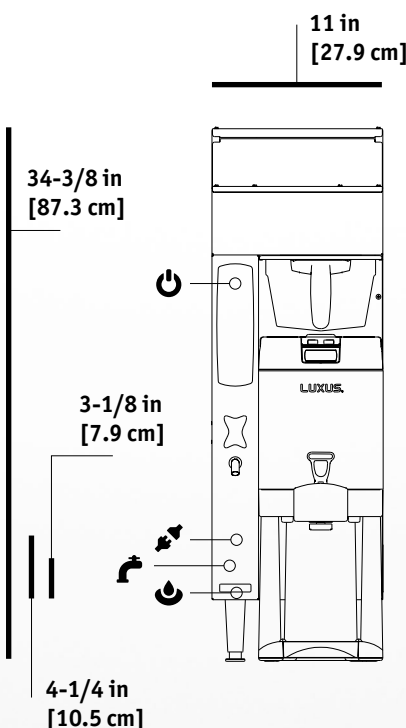
## Measurements

Height	Width	Depth	Empty Weight	Filled Weight	Shipping Weight
34 <sup>3</sup> / <sub>8</sub> in [87.3 cm]	11 in [27.9 cm]	18 in [45.7 cm]	46 lbs [21.0 kg]	81 lbs [36.8 kg]	52 lbs [23.6 kg]

### SIDE VIEW



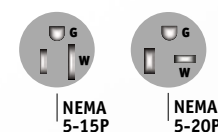
### FRONT VIEW



### SYMBOLS

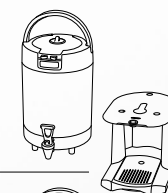
- Electrical Connector
- On / Off Switch
- Tank Drain
- Water Inlet

### NEMA PLUGS CONFIGURATIONS

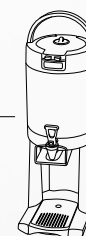


### DISPENSERS

Brewer can be used with:  
L3S-10 Thermal Dispenser  
with Serving Station L3S-10



L3D-10 Thermal  
Dispenser



FETCO® is an active member of

## Information

[www.fetco.com](http://www.fetco.com)

+1 847.719.3000  
1.800.338.2699 USA  
+1 847.719.3001

Food Equipment Technologies Co.  
600 Rose Road  
Lake Zurich, IL 60047  
USA