

ROCKET[®]
ESPRESSO MILANO





SOME PEOPLE CONSIDER THE DOMESTIC ESPRESSO MACHINES BUILT BY ITALIAN COMPANY ECM IN THE 1980'S AS LEGENDARY.

WHEN WE AT ROCKET ESPRESSO PURCHASED THE RIGHTS TO BUILD THOSE VERY MACHINES, WE CERTAINLY THOUGHT SO.

WE THEN SET ABOUT TURNING THE LEGENDARY MACHINES INTO THE FINEST HANDMADE ESPRESSO MACHINES. OUR MACHINES HAD TO BE BEAUTIFUL AND MADE WITH METICULOUS CARE AND ATTENTION TO DETAIL.

MORE IMPORTANTLY THE MACHINES OF ROCKET ESPRESSO HAD TO BE CAPABLE OF PRODUCING THE FINEST ESPRESSO.

ROCKET ESPRESSO, A PARTNERSHIP BETWEEN NEW ZEALANDERS JEFF KENNEDY AND ANDREW MED AND ITALIAN DANIELE BERENBRUCH, WHOSE FATHER HAD BEEN THE INSPIRATION BEHIND THOSE VERY FIRST MACHINES.





► **R58**

- * DUAL BOILERS OF 0.58 AND 1.7 LITRES
- * PID CONTROLLED
- * ROTARY PUMP
- * EXTERNAL PUMP PRESSURE ADJUSTMENT
- * INSULATED BOILERS
- * 2.5 LITRE WATER RESERVOIR OR DIRECT WATER CONNECTION OPTION
- * FULL STAINLESS STEEL BODY
- * COOL TOUCH STEAM WAND
- * POLISHED STAINLESS STEEL CUP FRAME SURROUND.





► *GIOTTO EVOLUZIONE V2*

- * HEAT EXCHANGER BOILER DESIGN 1.8 LITRE
- * INSULATED BOILER
- * ROTARY PUMP
- * EXTERNAL PUMP PRESSURE ADJUSTMENT
- * COMMERCIAL GRADE PRESSURE STAT
- * FULL STAINLESS STEEL BODY
- * 2.9 LITRE WATER RESERVOIR OR DIRECT WATER CONNECTION OPTION
- * COOL TOUCH STEAM WAND.





► **CELLINI EVOLUZIONE V2**

- * HEAT EXCHANGER BOILER DESIGN 1.8 LITRE
- * INSULATED BOILER
- * ROTARY PUMP
- * EXTERNAL PUMP PRESSURE ADJUSTMENT
- * COMMERCIAL GRADE PRESSURE STAT
- * FULL STAINLESS STEEL BODY
- * 2.9 LITRE WATER RESERVOIR OR DIRECT WATER CONNECTION OPTION
- * COOL TOUCH STEAM WAND.

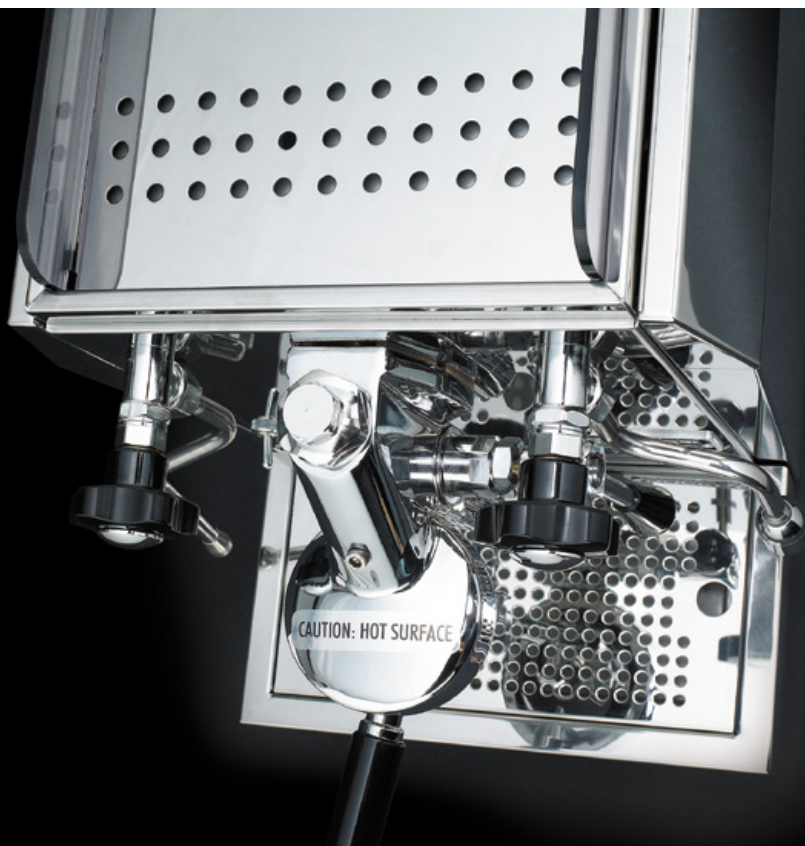


CKET®
SO MILANO



► **GIOTTO PLUS V2**

- * HEAT EXCHANGER BOILER DESIGN 1.8 LITRE
- * INSULATED BOILER
- * VIBRATION PUMP
- * COMMERCIAL GRADE PRESSURE STAT
- * FULL STAINLESS STEEL BODY
- * 2.9 LITRE WATER RESERVOIR
- * COOL TOUCH STEAM WAND.

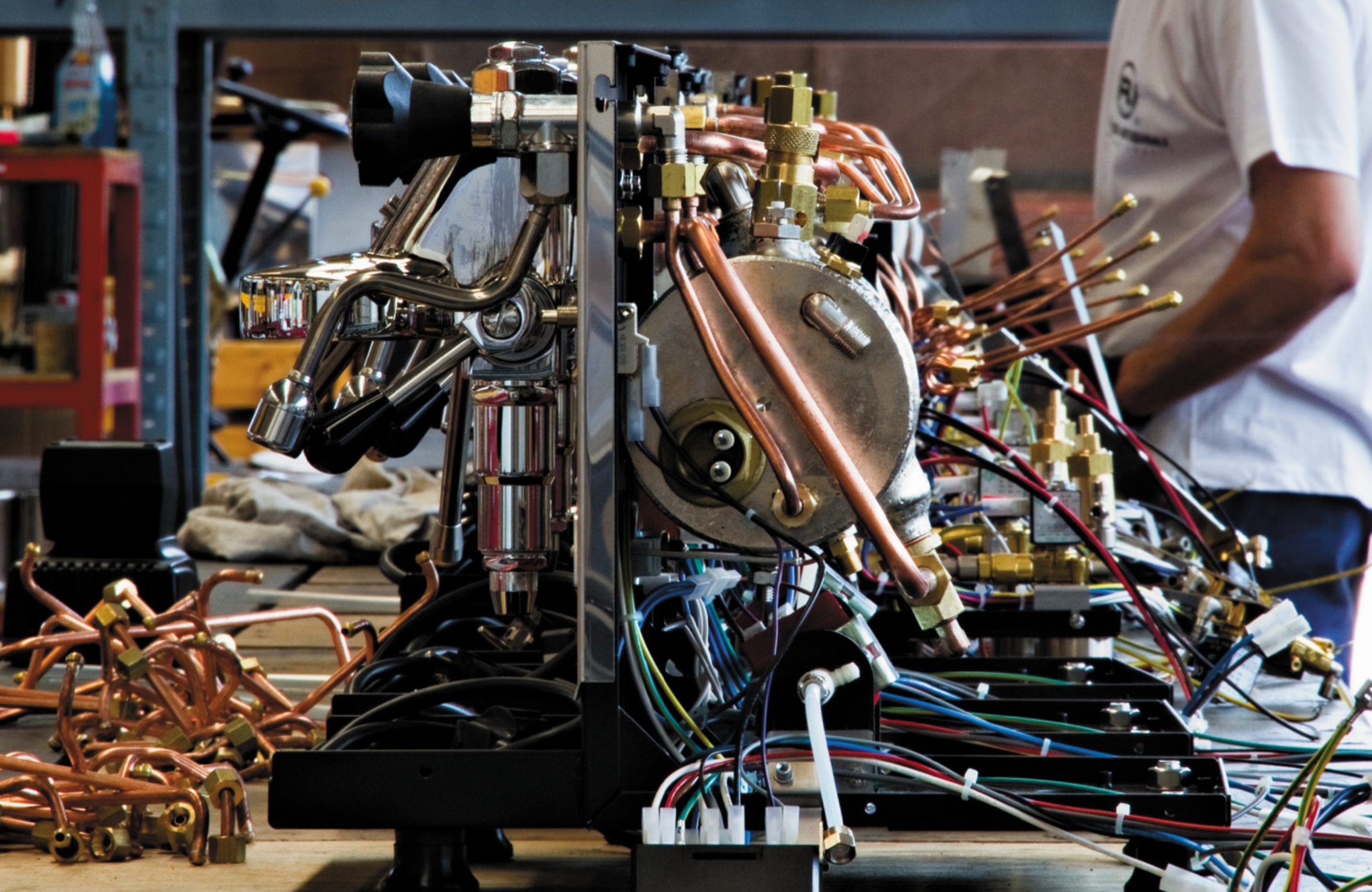




► **CELLINI PLUS V2**

- * HEAT EXCHANGER BOILER DESIGN 1.8 LITRE
- * INSULATED BOILER
- * VIBRATION PUMP
- * COMMERCIAL GRADE PRESSURE STAT
- * FULL STAINLESS STEEL BODY
- * 2.9 LITRE WATER RESERVOIR
- * COOL TOUCH STEAM WAND.





► **GIOTTO PROFESSIONALE**

- * HEAT EXCHANGER BOILER DESIGN 1.8 LITRE
- * INSULATED BOILER
- * ROTARY PUMP
- * COMMERCIAL GRADE PRESSURE STAT
- * FULL STAINLESS STEEL BODY
- * DIRECT WATER CONNECTION ONLY
- * COOL TOUCH STEAM WAND.





► ***CELLINI PROFESSIONALE***

- * HEAT EXCHANGER BOILER DESIGN 1.8 LITRE
- * INSULATED BOILER
- * ROTARY PUMP
- * COMMERCIAL GRADE PRESSURE STAT
- * FULL STAINLESS STEEL BODY
- * DIRECT WATER CONNECTION ONLY
- * COOL TOUCH STEAM WAND.





ROCKET
ESPRESSO MILANO

ROCKET
ESPRESSO MILANO

ROCKET
ESPRESSO MILANO

ROCKET
ESPRESSO MILANO

ROCKET
ESPRESSO MILANO

ROCKET
ESPRESSO MILANO

ROCKET
ESPRESSO MILANO

ROCKET
ESPRESSO MILANO

ROCKET
ESPRESSO MILANO

ROCKET
ESPRESSO MILANO

ROCKET
ESPRESSO MILANO

ROCKET
ESPRESSO MILANO

ROCKET
ESPRESSO MILANO

ROCKET
ESPRESSO MILANO

ROCKET
ESPRESSO MILANO

ROCKET
ESPRESSO MILANO

ROCKET
ESPRESSO MILANO

ROCKET
ESPRESSO MILANO

ROCKET
ESPRESSO MILANO

ROCKET
ESPRESSO MILANO

ROCKET
ESPRESSO MILANO

ROCKET
ESPRESSO MILANO

ROCKET
ESPRESSO MILANO

ROCKET
ESPRESSO MILANO

ROCKET
ESPRESSO MILANO

ROCKET
ESPRESSO MILANO

ROCKET
ESPRESSO MILANO

ROCKET
ESPRESSO MILANO

ROCKET
ESPRESSO MILANO

ROCKET
ESPRESSO MILANO

ROCKET
ESPRESSO MILANO

ROCKET
ESPRESSO MILANO

ROCKET
ESPRESSO MILANO

ROCKET
ESPRESSO MILANO

ROCKET
ESPRESSO MILANO

ROCKET
ESPRESSO MILANO

ROCKET
ESPRESSO MILANO

ROCKET
ESPRESSO MILANO

ROCKET
ESPRESSO MILANO

ROCKET
ESPRESSO MILANO

ROCKET
ESPRESSO MILANO

ROCKET
ESPRESSO MILANO

ROCKET
ESPRESSO MILANO

ROCKET
ESPRESSO MILANO

ROCKET
ESPRESSO MILANO

ROCKET
ESPRESSO MILANO

ROCKET
ESPRESSO MILANO

ROCKET
ESPRESSO MILANO

ROCKET
ESPRESSO MILANO

ROCKET
ESPRESSO MILANO

ROCKET
ESPRESSO MILANO

ROCKET
ESPRESSO MILANO

ROCKET
ESPRESSO MILANO

ROCKET
ESPRESSO MILANO

ROCKET
ESPRESSO MILANO

ROCKET
ESPRESSO MILANO

ROCKET
ESPRESSO MILANO

ROCKET
ESPRESSO MILANO

ROCKET
ESPRESSO MILANO

ROCKET
ESPRESSO MILANO

ROCKET
ESPRESSO MILANO

ROCKET
ESPRESSO MILANO

ROCKET
ESPRESSO MILANO

ROCKET
ESPRESSO MILANO

ROCKET
ESPRESSO MILANO

ROCKET
ESPRESSO MILANO

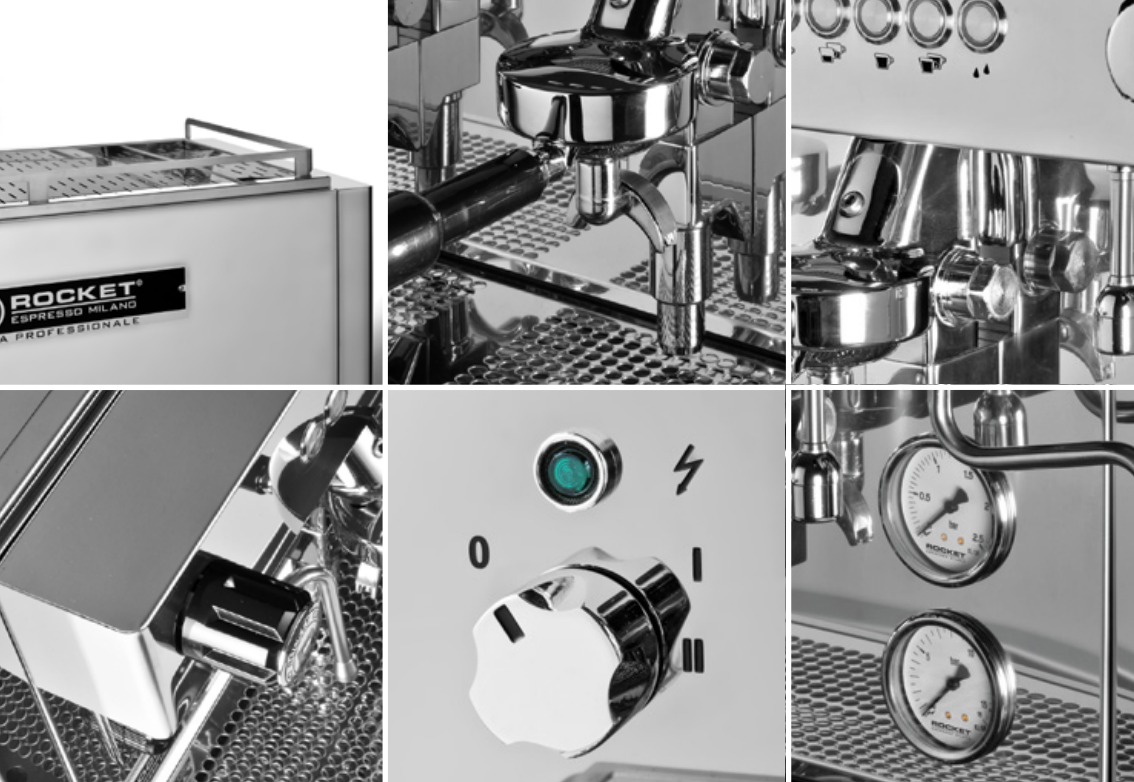
ROCKET
ESPRESSO MILANO

► **CELLINI CLASSIC**

- * HEAT EXCHANGER BOILER DESIGN 1.8 LITRE
- * VIBRATION PUMP
- * FULL STAINLESS STEEL BODY
- * 2.9 LITRE WATER RESERVOIR
- * COOL TOUCH STEAM WAND.







► REA 2 3 AND 4 GROUP

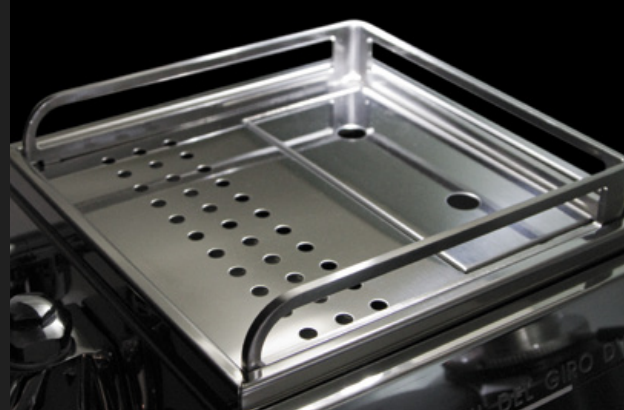
- * REA AUTOMATIC PORTION CONTROL
- * PID CONTROLLED
- * FULL STAINLESS STEEL BODY WORK OR BLACK VERSION
- * HIGH OR LOW DRIP TRAY VERSIONS
- * LARGE BOILER CAPACITIES:
 - 2 GROUP 14.5 LITRES
 - 3 GROUP 23 LITRES
 - 4 GROUP 28 LITRES



► *RES 2 3 AND 4 GROUP*

- * RES SEMI AUTOMATIC PORTION CONTROL
- * FULL STAINLESS STEEL BODY WORK OR BLACK VERSION
- * HIGH OR LOW DRIP TRAY VERSIONS
- * LARGE BOILER CAPACITIES:
 - 2 GROUP 14.5 LITRES
 - 3 GROUP 23 LITRES
 - 4 GROUP 28 LITRES





ROCKET ACCESSORY RANGE



VIALE DELLE INDUSTRIE 26
20090 SETTALA, MILANO, ITALIA
+39 02 910 910 10
WWW.ROCKET-ESPRESSO.COM