

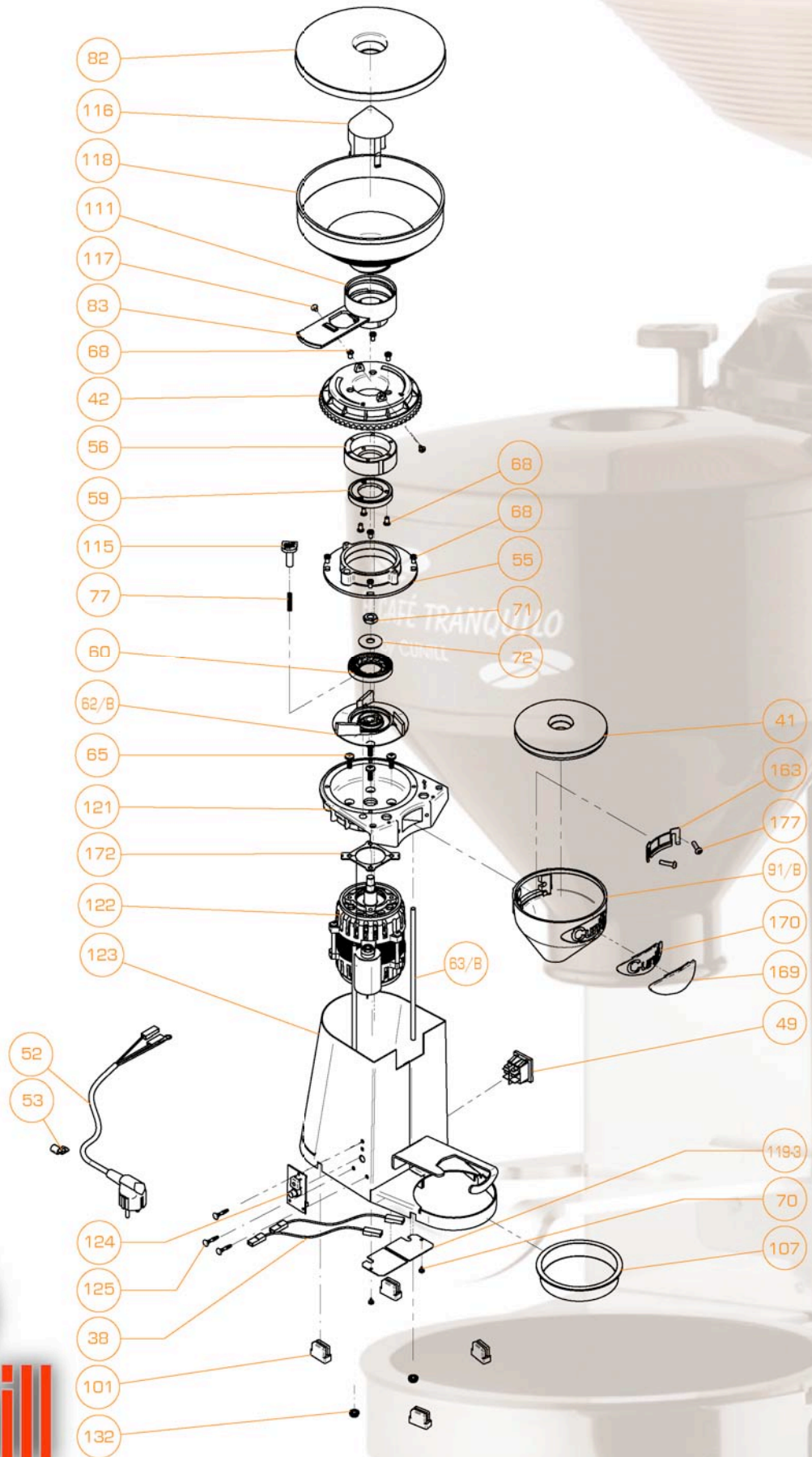
TRANQUILO

Pieces



Since 1957

TRANQUILO



Since 1957

TRANQUILO

REF.	DENOMINATION	CANT.	REF.	DENOMINATION	CANT.
101	RUBBER FOOT	4	60	LOWER BLADE Ø59	1
107	CIRCULAR DISPENSER TRAY	1	62/B	ALLUMINIUM EXPELLER "CLASSIC"	1
111	HOPPER COLLAR	1	63/B	THREADED ROD M6x215	2
115	ADJUSTMENT PAWL	1	65	SCREW M6x15 C.C. MOTOR COVER DIN 7985	4
116	HOPPER INNER PROTECTOR	1	68	SCREW M5x8 DIN 7985	10
117	SCREW Ø4,2x9,5 DIN 7983	2	70	SCREW D3,5x6,5DIN 7981	2
118	HOPPER 1/2Kg	1	71	NUT FOR BLADES FIXATION	1
119-3	FULL METAL WIRE EXIT COVER	2	72	WASHER FOR BLADES FIXATION	1
121	PLASTIC COVER CAFE TRANQUILO; FULL METAL	1	77	ADJUSTMENT PAWL SPRING	1
122	MOTOR N° 4	1	82	HOPPER COVER	1
123	BODY CAFE TRANQUILO	1	83	CLOSING HOPPER PIECE	1
124	CAFE TRANQUILO ELECTRONIC BOARD	1	91/B	1 PIECE FUNNEL	1
125	CAFE TRANQUILO CIRCUIT SEPARATOR	3			
132	NUT M6 DIN 6923.8	2			
163	FINGER PROTECTOR	1			
169	CUSTOMIZED PLAQUE DISPENSER/COFFEE GRINDER	1			
170	CUNILL PLAQUE DISPENSER/COFFEE GRINDER	1			
172	FIXING MOTOR WASHER	1			
177	SCREW M5x20 ISO 7380	2			
38	SWITCH CABLE	2			
41	COFFEE GRINDER DISPENSER COVER	1			
42	ADJUSTMENT DISK	1			
49	SWITCH	1			
52	ELECTRIC CABLE WITH PLUG	1			
53	CABLE METAL CLIP	1			
55	GRINDWHEEL HOUSING SUPPORT	1			
56	GRINDWHEEL HOUSING Ø59	1			
59	UPPER BLADE Ø59	1			

