

00

300323

300221

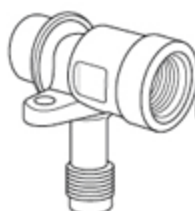
300222

300223

300324

300225

300325



300218

300217

300220

300231

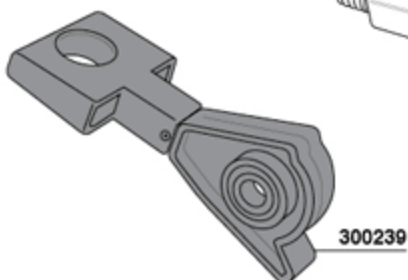
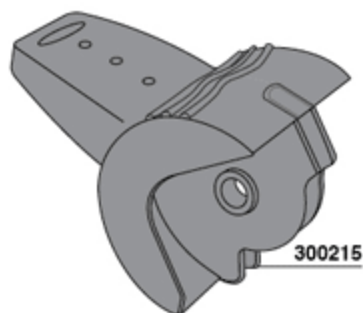
300221

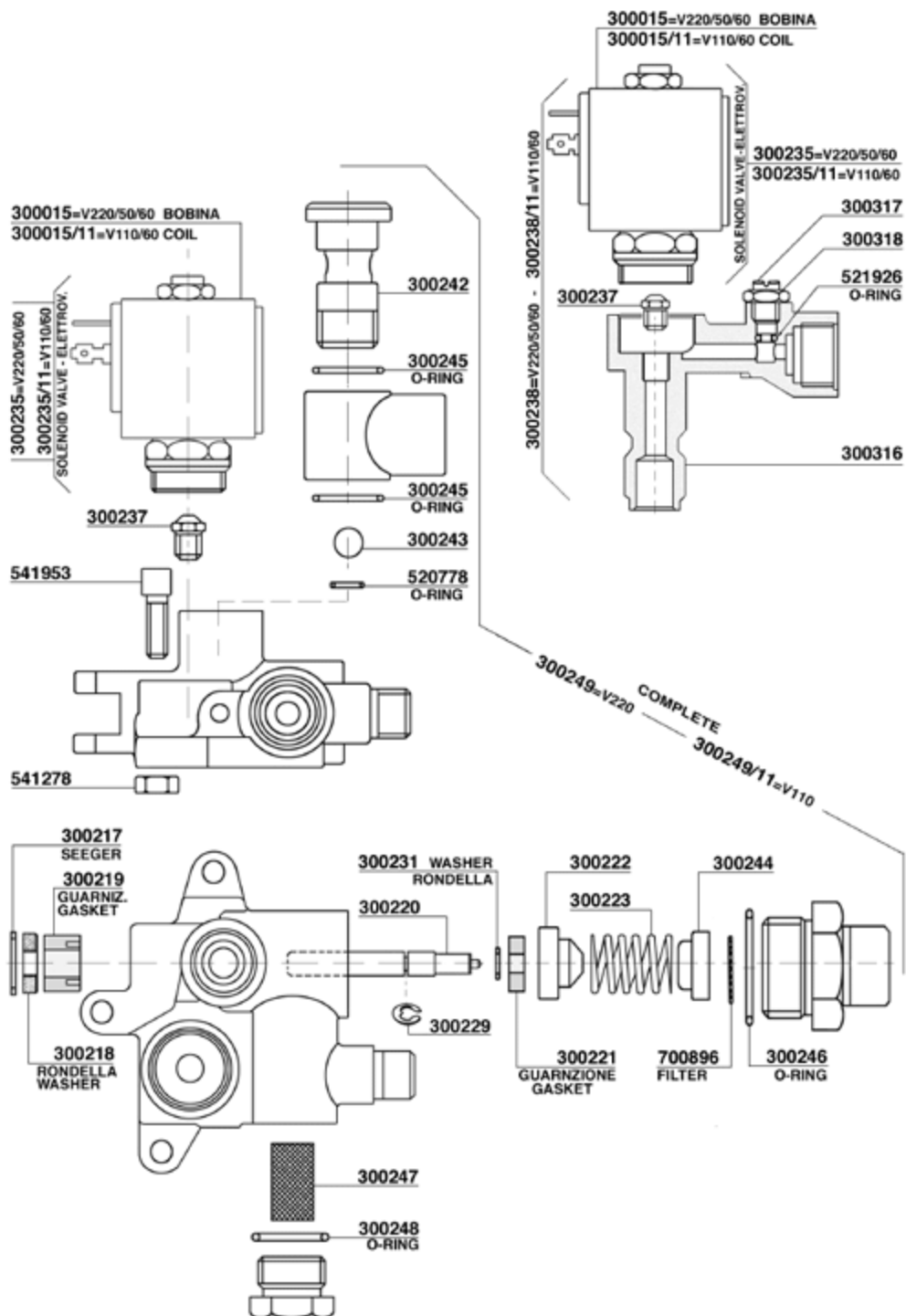
300222

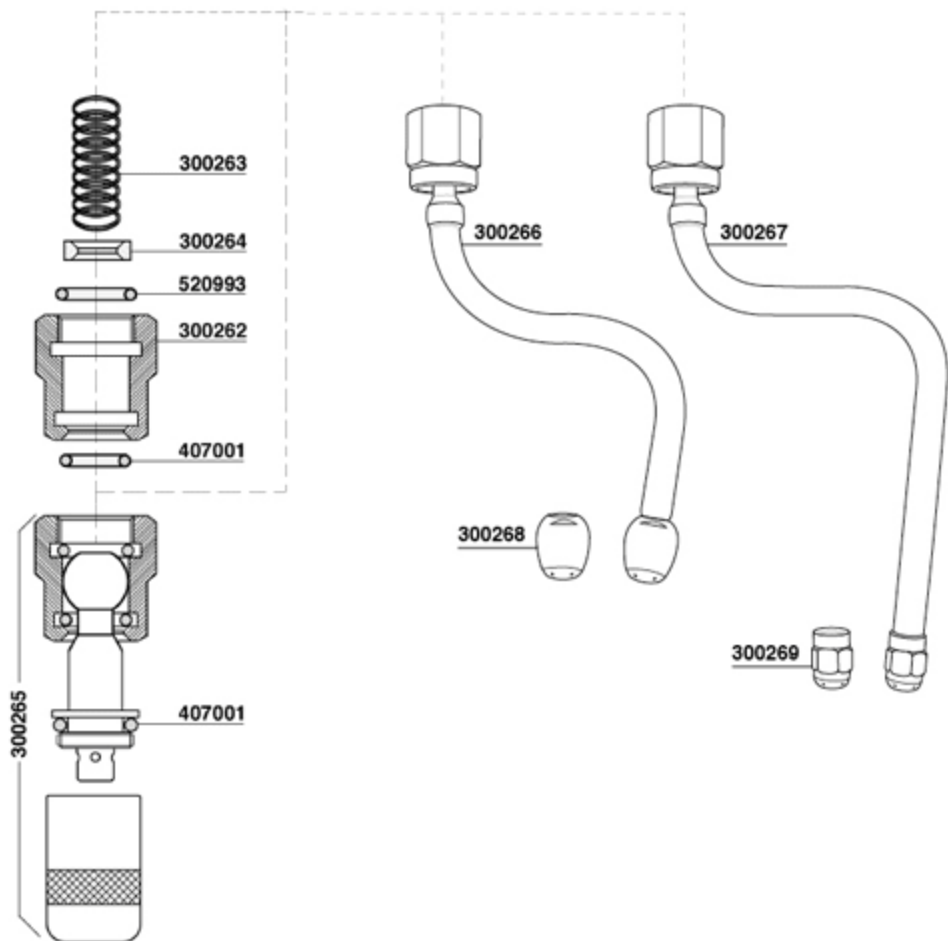
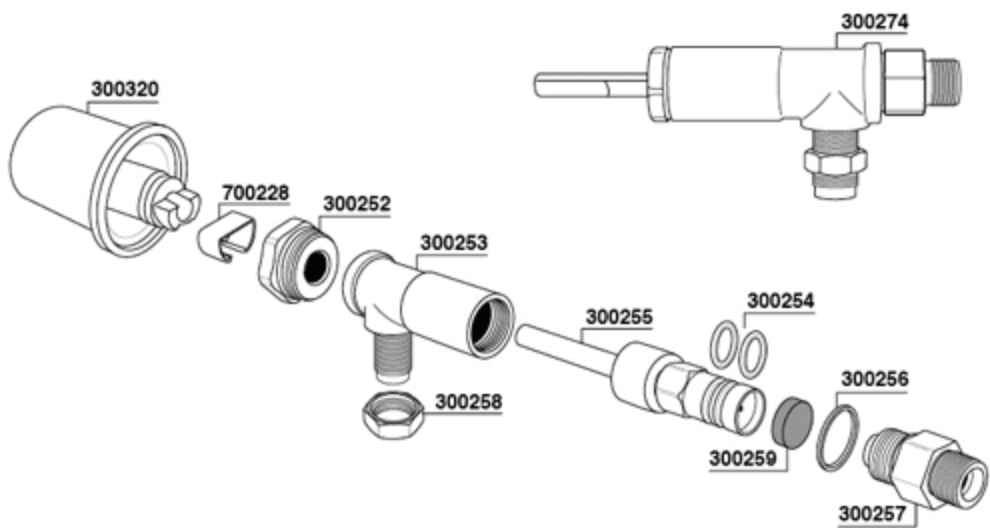
300223

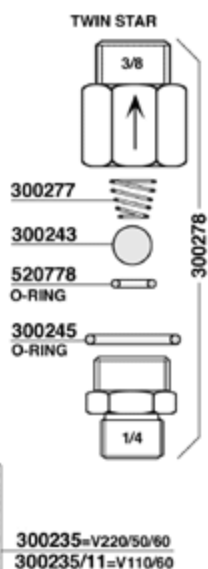
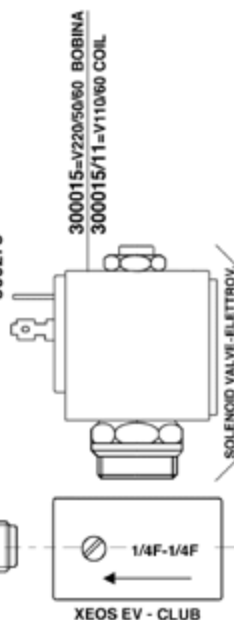
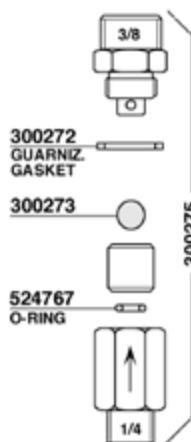
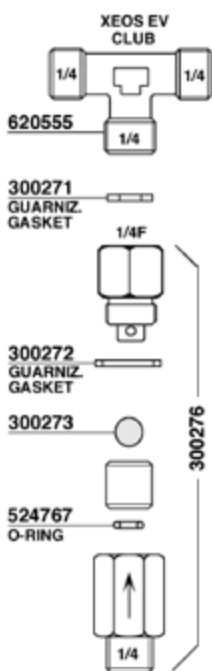
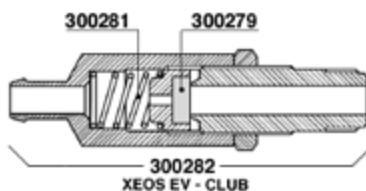
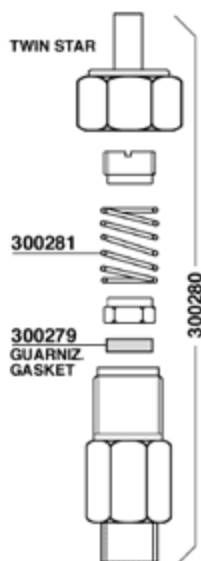
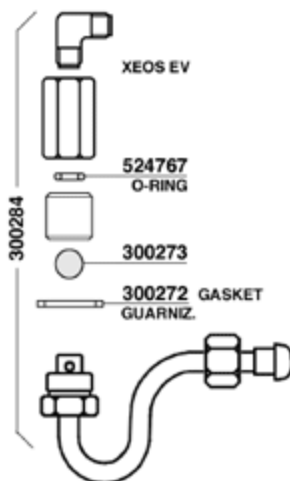
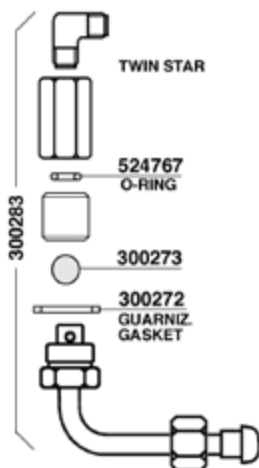
616688

300225

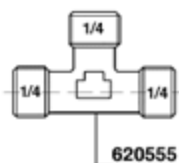








300235-V220/50/60
300235/11-V110/60

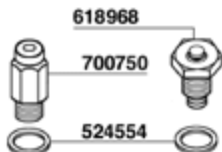




616597
616597/UJL =USA



615624/A
CE certificato
certified



618968

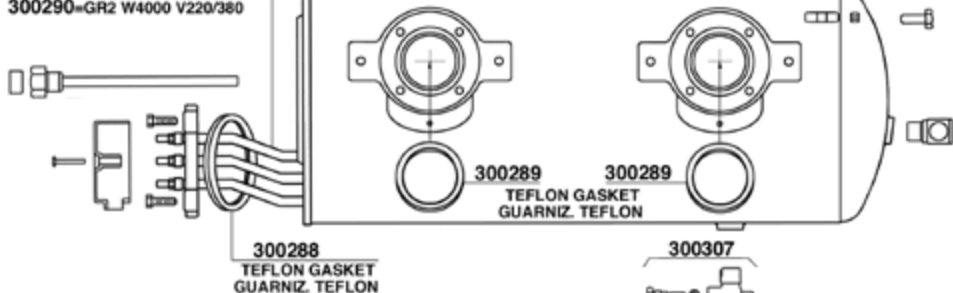
700750

524554

612601/L

300286 =mm.120
300286/L=mm.140

300291=GR1 W2400 V220/380
300290=GR2 W4000 V220/380

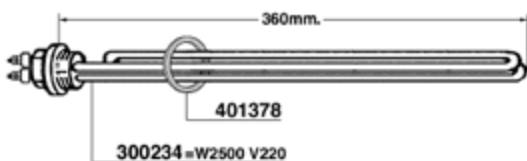


300288
TEFLON GASKET
GUARNIZ. TEFLON

300289
TEFLON GASKET
GUARNIZ. TEFLON

300307

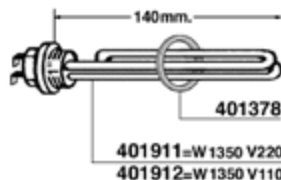
300287
O-RING



360mm.

401378

300234=W2500 V220



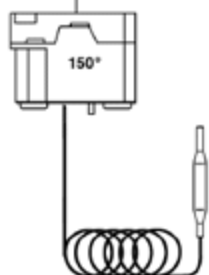
140mm.

401378

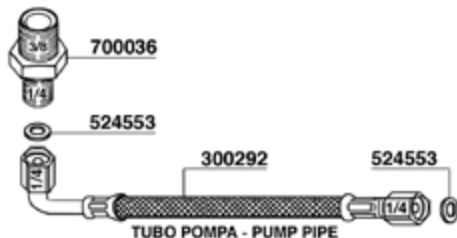
401911=W1350 V220

401912=W1350 V110

300293



150°



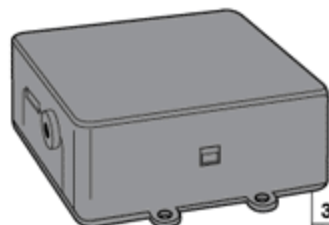
700036

524553

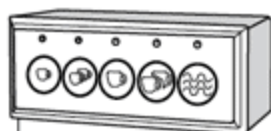
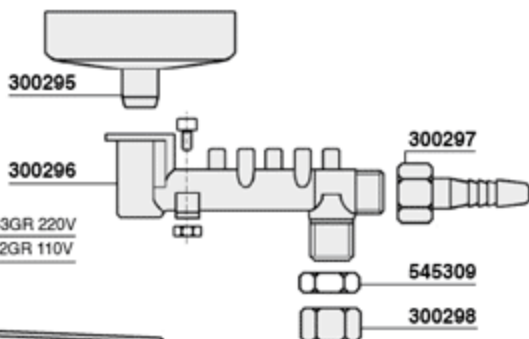
300292

524553

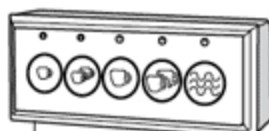
TUBO POMPA - PUMP PIPE



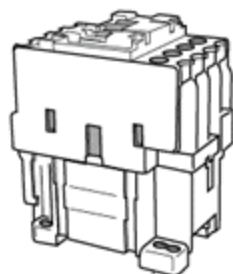
300300 1-2-3GR 220V
300299/11 2GR 110V



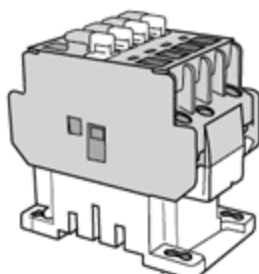
300270 1GR 220V
PULSANTIERA+CENTRALINA CLUB
TOUCH PAD+ELECTRONIC BOX CLUB



300306
PULSANTIERA CLUB
TOUCH PAD CLUB



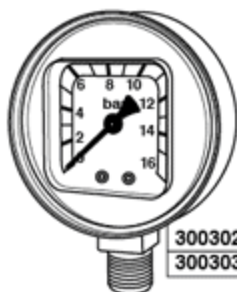
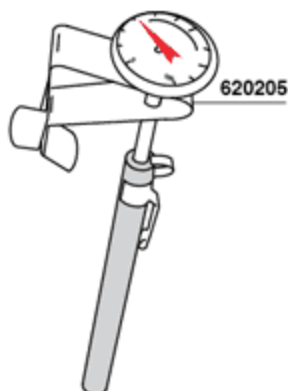
700930 220V
700931 110V



300346



300301
2,5-16 BAR



300302 16BAR
300303 3 BAR

GRUPPO LEVA - LEVER GROUP

