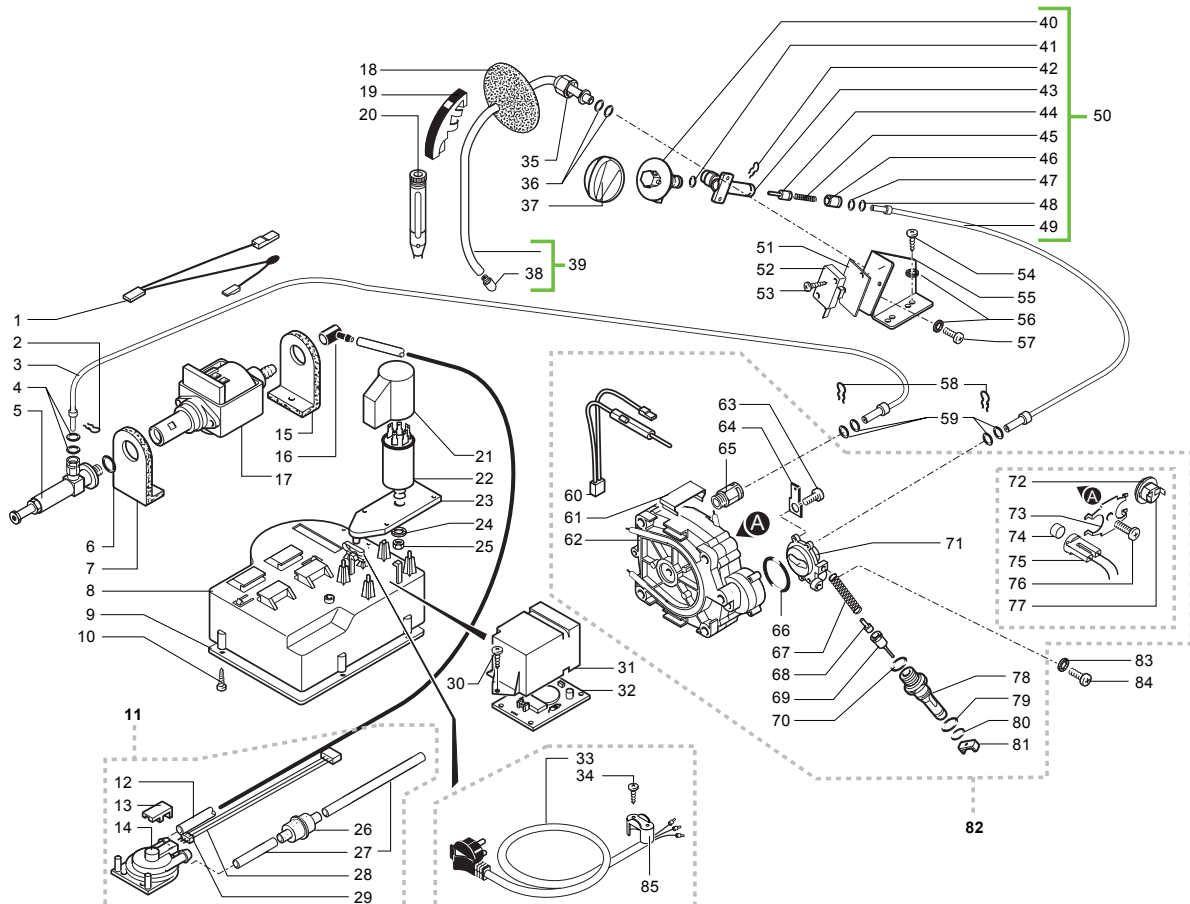
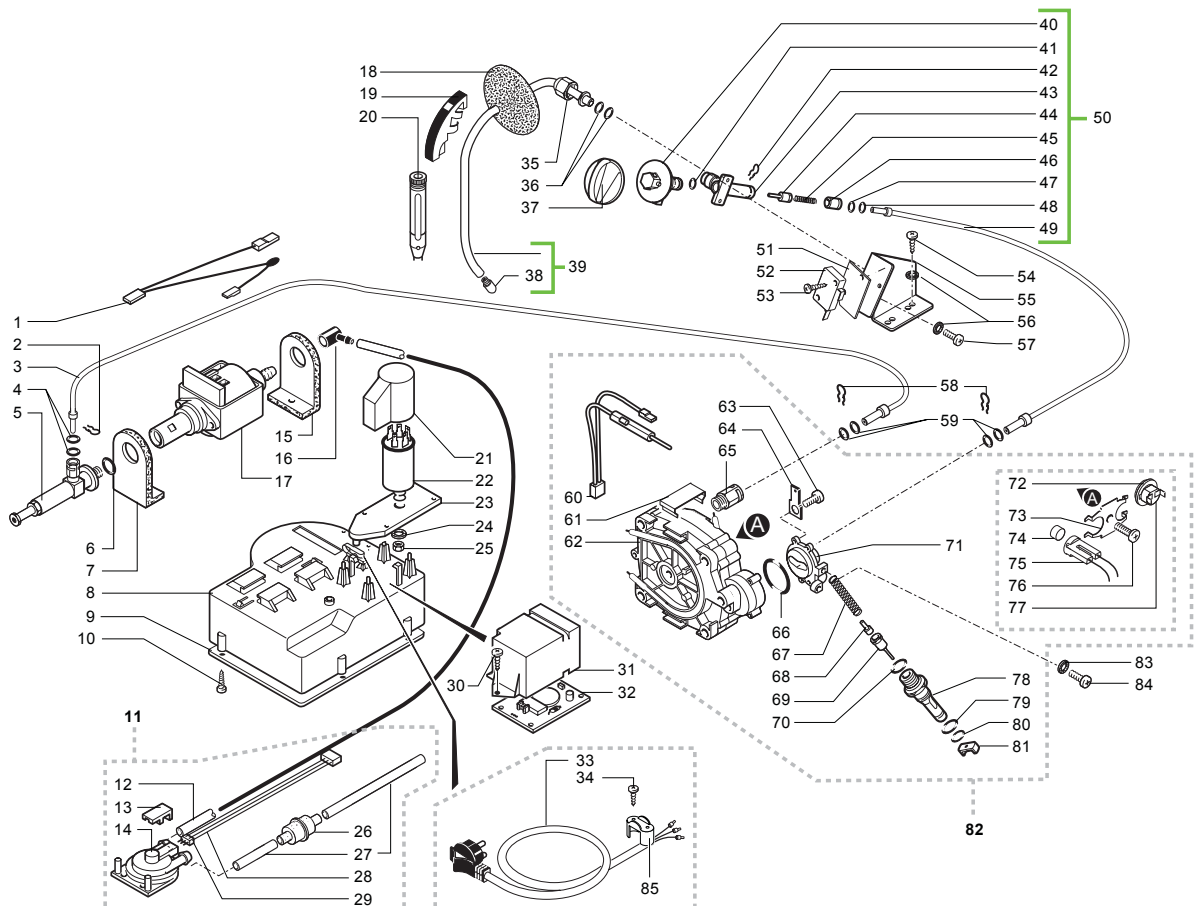


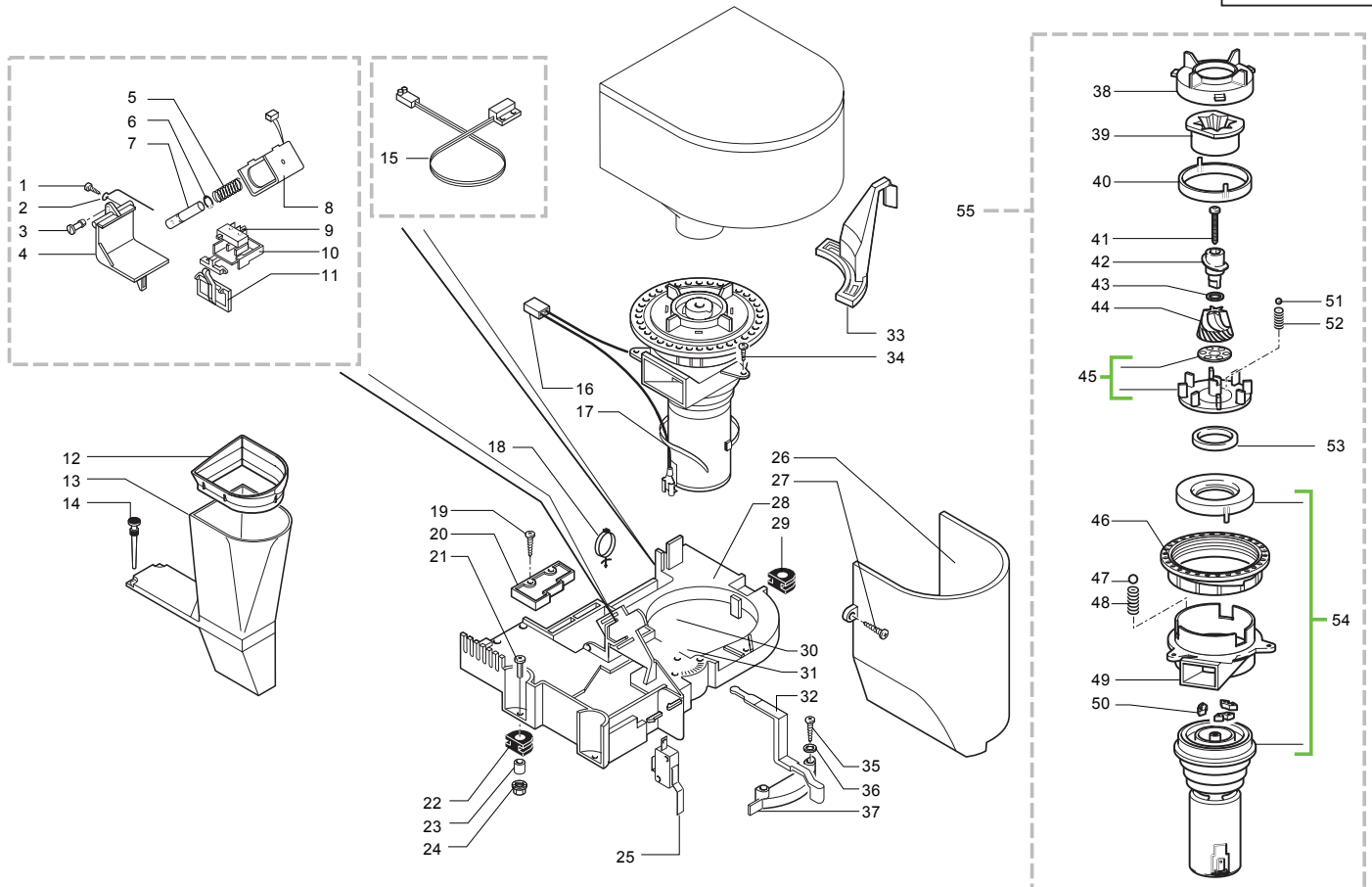
Ref.	Code	Denomination	Version	Ref.	Code	Denomination	Version
01	%NF18.001	Plate for pin D.3,2	Galvanized	45	%0327.003.230	Coffee container	Burned
02	%0301.831	Yellow PVC harness		46	%0335.006.230	Coffee container UL	
03	%0301.033.150	Grey tank casing		47	%9161.270	Seal for coffee container	
04	%U143.003	Panelvit TCB 3,5x16 head D.8		48	%NF14.002	Oteco plate NU 0503-3	
05	%0327.012.680	90° grey RAL 7015 connector dispenser		49	%0327.013.660	Silver T.F. doser lid powder	
06	%0327.010.680	Grey RAL 7015 fixed casing dispenser		50	%0335.005.660	UL Silver T.F. doser lid powder	
07	%0327.037	Spring for dispenser		51	%0312.013.280	Grey plug for screw hole	
08	%9972.027	Brown silicone tube 5x8 L. 90 mm		52	%0301.019	Peg for door	
09	%0301.052	Seal for dispenser screw		53	%0301.020	Pin for door	
10	%0301.050	M3 Screw for dispenser		54	%9161.140	Seal for unit plate	
11	%0327.011.680	Mobile dispenser casing grey		55	%NV01.001	Adhesive foot	
12	%0327.A07.680	Grey RAL 7015 dispenser ass.		56	%0301.041.150	Grey unit support plate	
13	%0327.007.210	Grey grate	Galvanized	57	%0327.008.660	Silver T.F. water lid	Burned
14	\$145500211	Red float		58	%NM01.032	OR ORM 0060-30 silicone black	
15	%0327.019.680	Grey RAL 7015 dispenser cover		59	%9161.110	Piston spring for fully aut. machine	
16	%0327.006.660	Silver drip tray T.F.		60	%9111.027.150	Piston for tank grey	
17	%9991.093	Magnet D.9,5 X 1,5		61	%9161.050.230	Cap for float	
18	%NE15.003	Plain male tongue 6,3 D.5,2		62	%9161.112.150	Grey level float	
19	%U208.001	Toothed washer 4,3x8 UNI 3703 B		63	%0327.028.230	Water tank ass.	
20	%U127.010	M4,0x10 tapt.TCB screw DIN 7500C		64	%0335.012.230	Water container ass. UL	
21	%U201.005	Plain washer 4,3x12 DIN 7349		65	%0327.015.660	Silver T.F. door ass.	
22	%U127.010	M4,0x10 tapt.TCB screw DIN 7500C		66	%0327.026.660	Silver T.F. door knob	
23	%0327.030.20A	Cupwarming plate ass. grey 230V	Galvanized	67	%U433.001	2x06 NAIL UNI 7591	
24	%0327.030.20F	Cupwarming plate ass. grey 120V		68	%0313.012.150	S/Screen door cover	
25	%0327.020	Cupwarmer seal		69	%0301.040.150	Grey door closure lever	
26	%0327.024	Lateral tube		70	%0330.905	Right upper insert in techmate	
27	%0327.023	Frontal tube		71	%0330.903	Left upper insert in techmate	
28	%0338.001.660	S/screen lid Gaggia silver T.F.		72	%0327.908	Drip tray box	
29	%0338.002.660	S/screen lid Gaggia silver T.F. UL		73	%0330.907	Spacer in polystyrene	
30	%0327.036	General switch protection		74	%0330.902	Left lower insert in Techmate	
31	%NE03.028	Molveno switch B1031C1181000		75	%0327.905	Ondulated cardboard sheet	
32	%0312.026.660	Casing ass. silver T.F.		76	%0338.902	Gaggia external box	
33	%U043.012	M 4,0x6 TCBC screw UNI 7687		77	%0330.904	Right lower insert in Techmate	
34	%0701.031.150	Grey seal cover	Galvanized Burned	78	%9161.021.150	Key for grey brew unit	Burned
35	\$145842900	Gaco seal dim 14		79	%9991.068	Brush for grinder cleaning	
36	%0701.014.150	Grey seal container		80	%9991.040.150	Grey measure	
37	%U111.004	2,9X9,5 aut. TSP screw DIN 7982 C		81	%0338.952	Instruction booklet Gaggia ITA	
38	%NM02.004	OR ORM 0080-20 EPDM		82	%0338.953	Instruction booklet Gaggia GB	
39	%0327.009.660	Silver T.F. coffee lid		83	%0338.958	Instruction booklet Gaggia Schuko	
40	%U143.003	Panelvit TCB 3,5x16 Head D.8		84	%0338.959	Instruction booklet Gaggia GB UL	
41	%U143.007	2,9x19 torx TCB screw SS					
42	%0301.057.150	Rotating ring with grey feet					
43	%U110.005	3,9x9,5 aut. TCB screw DIN 7981 F					
44	%9161.280	Cover for programmer hole					
45	%0327.005.660	Silver T.F. dump box					
46	%U109.017	2,9X6,5 aut. TCB screw DIN 7981 C					



Ref.	Code	Denomination	Version	Ref.	Code	Denomination	Version
01	%0315.802	Harness Klixon for pump		39	%0327.021	Steam tube ass.	
02	%9011.144	Fork for tube D.4		40	%0327.014	Faucet rod	
03	%9979.A38	Teflon tube ass. 4x2 L.150 7-7		41	%NM02.001	OR 2018 EPDM	
04	%NM02.028	OR 2015 EPDM FDA		42	%9011.144	Fork for tube D.4	
05	%9079.A27	Safety valve ass. fast/lock		43	%0327.017	Faucet body	
06	%NM02.020	OR 2031 EPDM		44	%9019.A04	Pin assembly	
07	%9991.056	Support for pump		45	%9011.007	Spring for pin	
08	%0301.056.150	Grey VDE power cable container		46	%9991.112	Bush for faucet	
	%0335.008.150	Grey UL power cable container		47	%140328161	OR D=3,85x1,90 IN EPDM	
09	%0301.055.150	Grey lid for power cable container		48	%NM02.028	OR 2015 EPDM FDA	
10	%U143.003	Panelvit TCB 3,5x16 head D.8		49	%9979.A40	4X2 Teflon tube ass. L.320 7-7	
11	%0317.A11	Turbine ass. complete with tubes UL	Galvanized only (USA)	50	%0327.R02	Spares unit Turmix faucet	
	%0327.A01	VDE turbine ass. complete with tube		51	%9991.014	Cardboard for microswitch	
12	%9972.022	5x8 Silicon tube L.2 mt		52	%NE05.013	Microswitch	
13	%9161.018	Turbine fork		53	%U109.014	2,9x16 aut. TCB screw DIN 7981 C	
14	%9160.034	Turbine ass. VDE with joint		54	%U110.013	3,9x6,5 aut. TCB screw DIN 7981 F	
15	%9991.056	Support for pump		55	%0327.022	Steam faucet bracket	
16	%9991.084	90° rubber connector		56	%U208.001	4,3x8 Toothed washer UNI 3703 B	
17	%9070.026.00A	Pump 230V		57	%U127.010	M 4,0x10 tap. TCB screw DIN 7500C	
	%9070.026.00F	Pump 120V		58	%9011.144	Fork for tube D.4	
18	%9161.058.150	Grey internal protection for tube		59	%NM02.028	OR 2015 EPDM FDA	
19	%9161.055.150	Grey RAL handgrip for steam tube		60	%0315.806	JP12 Blue harness	
20	%9990.006	Plastic pannarello ass.		60	%0317.821	UL Blue harness with thermal fuse	
21	%9161.278.150	Cap for antisturb filter		61	%9011.054	Spring for thermal fuse	
22	%NE13.039	Antisturb filter 0,47X2+1000Y2+0		62	%9019.A59.00A	Boiler casings ass. 230V	
23	%0327.035.150	Antisturb filter support			%9019.A59.00F	Boiler casings ass.120V	
24	%U208.009	Toothed washer 8,4x15 UNI 3703		63	%U046.003	M 4,0x12 TCBC indent. screw wash.8	
25	%U302.007	Hexagonal M8 nut UNI 5588		64	%NE15.003	6,3 D.5,2 plain male tongue	
26	%NV99.001	Aspiration filter		65	%9011.152	Connector for tube D.4 1/8	
27	%9972.022	5x8 Silicon tube L.2 mt		66	%NM01.022	OR 2106 silicone	
28	%0314.815	Connector ass. 3 poles for turbine prof.		67	%9011.132	Spring for pin	
	%0317.830	Conn. ass. 3 poles turbine prof. UL		68	%9011.075	Adapter for long pin	
29	%NL02.001	Sensor for turbine		69	%9019.A01	Pin ass.	
30	%U140.004	3,0x12 Panelvit TCB DIN 7505 B	Galvanized	70	%NM01.008	OR ORM 0080-20	Silicone
31	%9161.336.150	Grey UL cover for filter card		71	%9011.165	Boiler support with tube conn. D.4	
32	%0301.828.00F	Filter card 120V		72	%9991.085	Thermostat fixing washer	
33	%NE01.046	Italy grey cable D=4,8 H05	(I)	73	%9011.034	Thermostat retaining spring	
	%NE01.061	Schuko grey cable H05 1 mm	(B)	74	%9011.089	Spacer for sensor	
	%NE01.064	USA grey cable 3 POLE 1 mm	(USA)	75	%9019.A09	Sensor ass.	
	%NE01.100	U.K. Power cable	(GB)		%9019.A31	Sensor ass. for automatica UL	
34	%U140.009	3,0x16 Panelvit TCB DIN 7505 B	Galvanized	76	%U043.019	M 6,0x30 screw TCBC UNI 7687	Galvanized
	%U109.005	3,5x16 aut. TCB screw DIN 7981 C	Only with pos. 85	77	%NE09.021	Thermostat 150°nc faston 90°	
35	%9161.031	Nut for steam tube		78	%9011.100	Peg for valve in plastic	
36	%NM02.011	OR ORM 0060-20 EPDM		79	%NM01.035	OR ORM 0090-20	Silicone
37	%0330.005.660	Silver T.F. steam knob s/screen		80	%NM01.057	OR ORM 0050-20	Silicone
38	%9011.049	Dispenser for steam tube		81	%9011.099	Cursor for boiler valve in plastic	

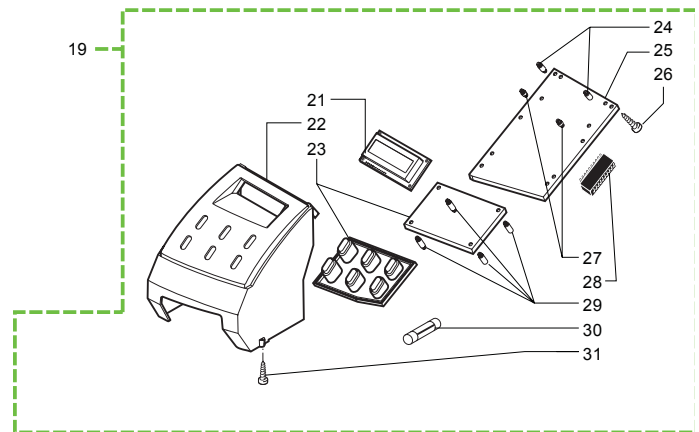
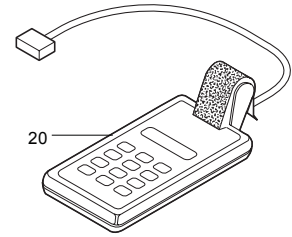
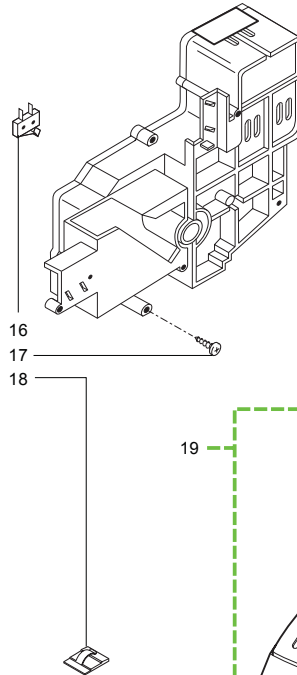
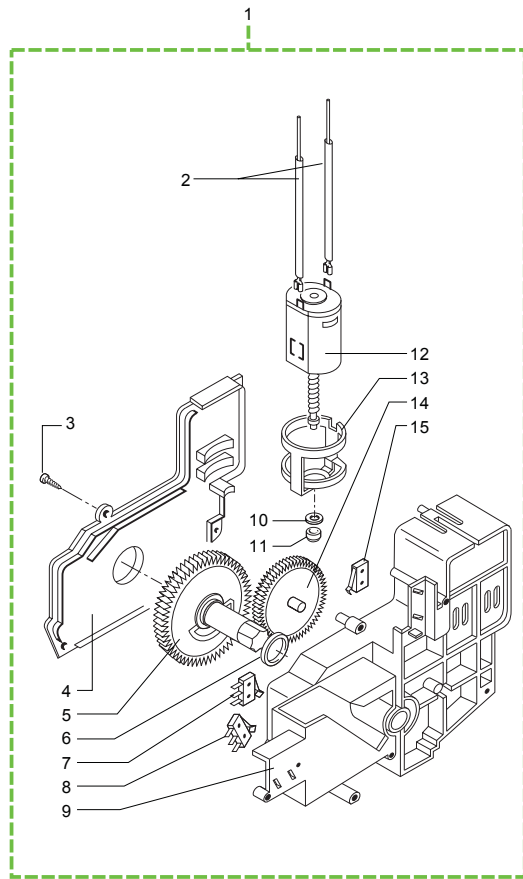


Ref.	Code	Denomination	Version	Ref.	Code	Denomination	Version
82	%9010.035.00A	Boiler ass. 230V					
82	%9010.061.00F	UL boiler ass. 120V					
83	%U208.003	5,3x10 toothed washer UNI 3703 B					
84	%U043.021	M 5,0x8 screw TCBC UNI 7687					
85	%9991.039	UL Cable retainer	Galvanized Only <div>USA</div>				

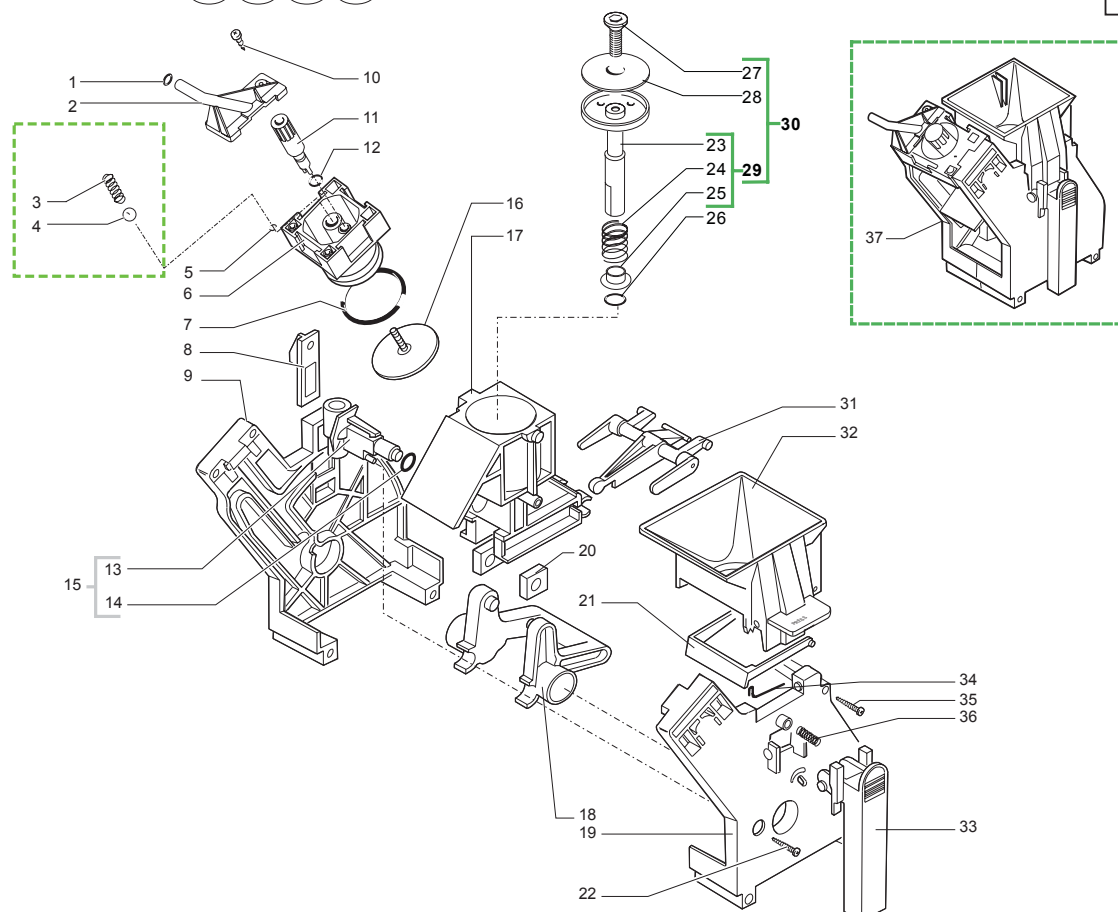


Ref.	Code	Denomination	Version
01	%U140.004	3,0x12 Panelvit TCB DIN 7505 B	Galvanized
02	%9161.048	Scraper rod	
03	%9161.076.150	Doser door grey pin	
04	%9161.074.150	Grey doser door	
05	%9161.044	Doser electromagnet spring	
06	%U701.003	Snap ring 7 UNI 7434	
07	%9161.041	Electromagnet doser core	
08	%9129.A21.00A	Coffee doser coil ass. 230V	
	%9129.A07.00F	Coffee doser coil ass. 120V	
09	%NE05.017	Microswitch	
10	%9161.072.150	Micro support grey cursor	
11	%9161.073.150	Dose control grey compensator	
12	%0327.027.150	Powder hopper appendix	
13	%9161.223.150	Complete hopper for powder coffee	
14	%9161.082	Rubber coupler	
15	%0301.811	Connector ass. 2 pole level	
16	%0301.804	Connector ass. 2 pole coffeegrinder	
17	%144320200	Self lock strip L=200 mm	
18	%NF11.034	Cable holder support	
19	%U140.004	3,0X12 TCB Panelvit DIN 7505 B	Galvanized
20	%9161.296.150	Cover for doser hole	
21	%U043.004	M 4,0x16 TCBC screw UNI 7687	Galvanized
22	%9991.005	Rubber for coffee grinder	
23	%9141.003	Spacer for rubber	
24	%U324.006	M4 flanged indented base nut	
25	%NE05.037	Microswitch	
26	%9161.053.150	Grey coffeegrinder protection	
	%9161.335.150	UL grey coffeegrinder protection	
27	%U110.003	3,5X9,5 aut. TCB screw DIN 7981 F	
28	%9161.029.150	Grey plate for coffeegrinder	
29	%9991.005	Rubber for coffee grinder	
30	%U140.004	3,0x12 Panelvit TCB DIN 7505 B	Galvanized
31	%9161.097.150	Grey lever fixing plate	
32	%0313.003.150	Grey RAL 7016 adjustment lever	
33	%9161.080.150	Grey RAL 701 grinding adjustment lever	
34	%U140.004	3,0x12 Panelvit TCB DIN 7505 B	Galvanized
35	%U109.015	2,9X9,5 screw aut. TCB DIN 7981 C	
36	%U201.001	3,2X9 plain washer DIN 7349	Galvanized
37	%9161.054.150	Grey RAL 7016 dose adjust. scale	
38	%9141.018	Support for upper grinder	
39	%9141.039	Upper grind	
40	%142844550	Upper grinder cover	
41	%U143.004	TCB 3,5x40/28 SX torx T10 screw	

Ref.	Code	Denomination	Version
42	%9141.030	Worm feeding screw	
43	%U201.002	10x16x0,2 plain washer DIN 988	Galvanized
44	%9141.040	Conical grind	
45	%9141.044	Support for lower grinder with ring	
46	%9141.017	Adjustment ring nut	
47	%128610421	Stainless stell AISI 304 sphere D=3,2 mm	
48	%126770117	Spring for coffeegrinder	
49	%9141.016	Motor support	
50	%140230400	Shock absorber support for conical grind.	
51	%128610521	Stainless steel AISI 304 sphere D=5,5 mm	
52	%126765517	Steel spring sphere D=5,5	
53	%140360200	Felt ring for coffee grinder	
54	%0301.R10.00A	Spare motor unit 230V	
55	%9140.005.00A	Standard ass. 230V coffee grinder	B
	%9140.005.00F	Standard ass. 120V coffee grinder	
	%9140.008.00A	Itlay setting ass. 230V coffee grinder	I



Ref.	Code	Denomination	Version	Ref.	Code	Denomination	Version
01	%9120.006.150	Grey ratiomotor ass. with tube	Galvanized				
02	%9120.022.150	UL grey ratiomotor ass. with tube					
	%0301.812	4 Pole connector ass. cupwarmer					
	%0317.833	4 Pole UL connector ass. cupwarmer					
03	%U143.003	3,5x16 Panelvit TCB head D.8					
04	%9121.043.150	Grey ratiomotor lid					
05	%9121.069	Z.108/M400 gear					
06	%9161.368	Mylar washer for ratiomotor					
07	%NE05.038	Microswitch					
08	%NE05.038	Microswitch					
09	%9121.064.150	Casing with grey tube and pin					
10	%9121.050	Bakelite washer D.5.5					
11	%9121.046	Sintered bush for motor					
12	%9121.047	Motor ass. for ratiomotor					
13	%9121.044	Antivibration for motor					
14	%9121.042	Z.12/90 gear	Galvanized				
15	%NE05.038	Microswitch					
16	%NE05.038	Microswitch					
17	%U143.003	3,5x16 TCB panelvit head D.8					
18	%NE17.002	Adhesive cable retainer D=10 mm					
19	%0327.R06.66A	Electronic spare ass. std silver					
	%0335.R02.66F	UL Electronics spare ass. std silver 120V					
	%0336.R04.66A	Electronic spare ass. ITA silver 230V					
20	%1440.000.00A	Royal 230V programmer	Galvanized				
21	%0313.804	Display Royal Digital/Professional					
22	%0327.032.660	Silver Electronics support					
	%0335.004.660	UL silver electronics support					
23	%0327.803	Ass. touch panel					
24	%NL04.005	Richco spacer MSPM05-01 BD					
	%NL04.006	Richco spacer MSPM06-01					
25	%0330.805.00A	CPU el. card T/K/B/S 230V wash					
	%0330.805.00F	CPU card T/K/B/S 120V wash					
	%0336.803.00A	CPU card STRATOS 230V ITA					
26	%U140.004	3,0X12 TCB panelvit DIN 7505 B					
27	%NL04.008	Richco spacer MSPM-2-01					
	%NL04.010	Richco spacer MSPM-3-01					
28	%0327.804	Micro TU/KO/BO/SI V.0.36T/45E7 R03					
	%0330.807	Micro V.044/74BA					
29	%NL04.004	Richco spacer MSPM07-01 BK	Galvanized				
	%NL04.009	Richco spacer MSPM-8-01					
30	%NE13.044	5,0x20 8A 250V delayed fuse					
31	%U140.004	3,0x12 TCB panelvit DIN 7505 B					



Ref.	Code	Denomination	Version	Ref.	Code	Denomination	Version
01	%NM02.017	OR ORM 0055-15 EPDM	EPDM				
02	%9161.034.150	Grey coffee outlet sleeve					
03	%9161.222	Conical spring					
04	%9991.168	Glass sphere D.5 mm					
05	%NM02.013	OR ORM 0080-15					
06	%9161.193.150	Counterpiston for grey unit					
07	%NM01.044	OR ORM 0320-40					
08	%9161.067.150	Plate for grey unit coupling					
09	%9161.070.150	Rear plate for grey unit					
10	%U140.019	3,0x16 TCB Panelvit DIN 7505 B SS					
11	%0701.R05.050	Black pin for percolator	(B) (GB) (USA)				
	%0701.R05.150	Grey pin for percolator					
12	%NM02.006	OR R5					
13	%9161.064.150	Grey water inlet sleeve					
14	%NM02.007	OR 2025 EPDM					
15	%0301.R04.150	Spare sleeve grey unit					
16	%0301.R18	Spares unit percolator					
	%0301.R19	Spares unit percolator					
17	%9161.195.150	Complete container for grey unit					
18	%9161.066.150	Elbow shaft for grey unit	(I)				
19	%9161.288.150	Front plate oem for grey unit					
20	%9161.094.150	Drilled black for grey unit					
21	%9161.060.150	Scraper for grey unit					
22	%U140.019	3,0x16 TCB panelvit DIN 7505 B SS					
23	%9161.211.050	New piston with black insert					
24	%9161.198	Spring for piston					
25	%9161.191	Bush for neutral piston					
26	%NM02.018	OR ORM 0090-25 EPDM					
27	%U044.012	M 3,0x14 screw TSPC UNI 7688 SS					
28	%9161.167	Percolator D.35,8	(B) (GB) (USA)				
29	%9161.210.050	Complete piston for grey unit					
30	%0301.R16.050	Spare black new piston					
31	%9161.065.150	Connecting rod for grey unit					
32	%9161.123.150	Hopper for press grey unit					
33	%9161.046	Spring for unit scraper					
34	%U109.026	3,5x19 screw aut. TCB DIN 7981 C					
35	%9161.045	Spring for unit handgrip					
36	%9161.069.150	Handgrip for grey unit					
37	%9160.060.150	Brew grey unit OEM					
	%9160.061.150	Brew grey unit Elfo OEM	(I) (B) (GB) (USA)				

GAGGIA	MODULO AGGIORNAMENTO ESPLOSI EXPLODED VIEW UPDATING SHEET		Mod.	0041	
			Pag.	1	di 1

MODEL: **SYNCRONY DIGITAL** ESPLOSO: **ER0103** REV. **03**

LISTA CODICI DA MODIFICARE / CODES LIST TO BE MODIFIED

TAB.	POS.	COD. E DESCR. DA INSERIRE / CODE AND DESC. TO BE ADDED	AGG.
01	33	§145842900 Guarnizione Gaco Dim.14	
02	33	%NE01.46 Cavo Italia D=4.8 grigio H05	
02	82	%9010.035.00A Ass. caldaia 230V	SI
02	82	%9010.061.00F Ass. Caldaia 120V UL	SI
02	83	%U208.003 Rosetta dent. 5,3x10 UNI 3703 BRU	SI
02	84	%U043.021 Vite TCBC M5x8 UNI 7687 ZNP	SI
02	85	%9991.039 Fermacavo UL	SI
03	54	%0301.R10.00A Gruppo ricambio motore MC 230V	
04	19	%0327.R06.66A Ric. ass. el. Turmix Std arg.230V	
04	19	%0335.R02.66F Ric. ass. elettron. Std arg. 120V UL	
04	19	%0336.R04.66A Ric. ass. elettr. Stratos Ita arg. 230V	
04	25	%0330.805.00A Scheda CPU T/K/B/S 230V Wash	
04	25	%0330.805.00F Scheda CPU T/K/B/S 120V Wash	
04	25	%0336.803.00A Scheda CPU Spidem 230V Ita	

TAB.	POS.	COD. DA ELIMINARE / CODE TO BE REMOVED
01	33	%NM05.013 Guarnizione Gaco Dim.14
02	33	%NE01.61 Cavo SCHUKO H05 grigio 1 mm
03	54	%0301.R01.00A Gruppo ricambio motore MC 230V
04	19	%0327.A04.66A Ass.elettronica Turmix Std arg.230V
04	19	%0335.A06.66F Ass. elettronica Std arg. 120V UL
04	19	%0336.A02.66A Ass.elettronica Spidem Ita arg.230V
04	25	%0330.813.00A Scheda CPU std T/K/B/S 230V Wash
04	25	%0330.813.00F Scheda CPU std T/K/B/S 120V Wash
04	25	%0335.802.00A Scheda CPU 230V Ita

LISTA FIGURE DA MODIFICARE / PICTURES LIST TO BE MODIFIED

TAB.	POS.	DESCRIZIONE FIGURE DA INSERIRE PICTURES DESCRIPTION TO BE ADDED	ALL.

TAB.	POS.	DESCRIZ. FIGURE DA MOD./ ELIMINARE PICTURES DESCR. TO BE REMOVED	M/E.

Note: Le descrizioni delle posizioni 82/83/84/85 tavola 02 mancavano nella precedente revisione, ma i componenti erano già presenti nella figura dell'esploso.

DATA/DATE	REDATTO/IUSSUED	VERIF./APPROV.
10/04/06	Andrea Lollo	Ing. Eugenio Roncali

Legenda: TAB = Tavola/Table POS = Posizione/Position
M/E = Modifica-Elimina/Modify-Remove
ALL/ANN = Allegati/Annexes AGG = Aggiungere/Add