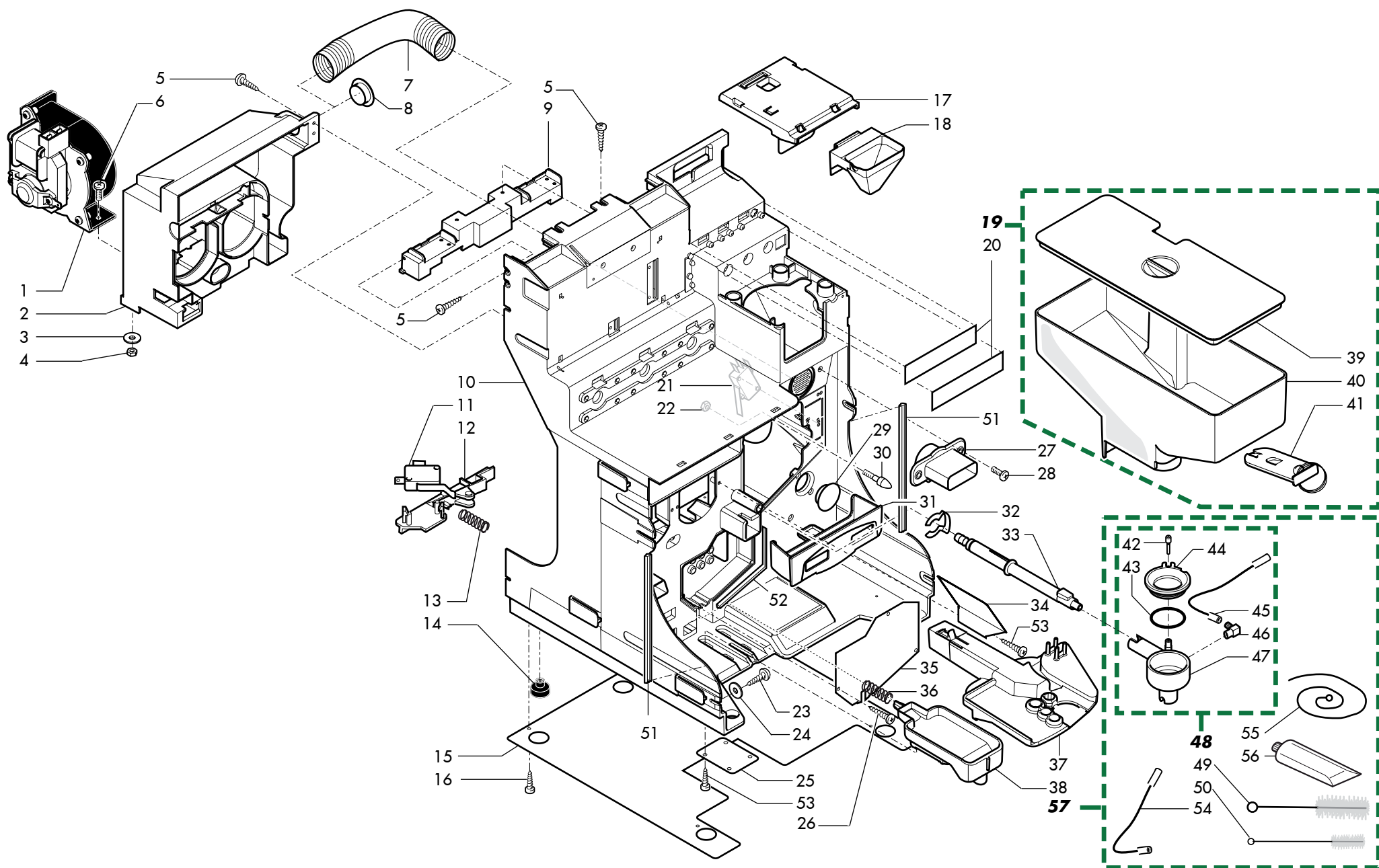


E19021

Pos	Article-Nr.	Description	Pos	Article-Nr.	Description
1	11008483	5P07 LEFT INSIDE LATERAL PANEL	50	11022256	
2	11010229	5P07 LEFT EXTERNAL LATERAL PANEL	51	U142.008	PANELVIT TSP 3,5X12 DIN 7505 A
3	NE16.009	GROMMET NOSTRUM 10476.1.2	52	11022259	
4	11013519		53	9011.144	SS FORK FOR TUBE D=4
5	11009070	LATERAL PANEL HANDLING PLATE	54	U201.001	PLAIN WASHER 3,2X9 DIN 7349 GALV
6	U110.003	screw AUT.TCB 3,5X9,5 DIN 7981	55	U116.005	screw AUT.PT TCB 3,0X8 WN 14
7	11023545		56	11010800	INOX GRID FLOATING SIGNAL SUPPOR
8	11007026	5P07 REAR PANEL	57	145501211	RED FLOAT FOR DRIP TRAY SMART
9	9111.501	INSULATION WASHER	58	11007013	5P07 WATER RECOVER BOX BLK
10	U109.016	screw AUT.TCB 3,9X13 DIN 7981	58	11023139	5P07 WATER RECOVER BOX BLK CSA 5
11	NV03.002	"CAP 3/4 ""KAPSTO 800R 3/4""	59	11013030	ROTATION PIN COFFEE GRILL FOR RA
12	NV01.009	RUBBER BUFFER	60	U701.006	SNAP RING 3,2 UNI 7434
13	9111.088	ADHESIVE SEAL FOR ASPIRATOR	61	U044.018	screw TSPC M5,0X8 UNI 7688 GA
14	U116.006	screw AUT.PT TCB 3,5X12 WN 14	62	11012740	
15	NF11.115	BLIND RIVETS	63	11011322	COIN CASE 5P07
16	11008501	SUPPORT FOR MICRO DOOR	64	11023494	PHEDRA GRATE FOR INOX-PLASTIC
17	NE05.039	BIPOLAR MICROSWITCH	65	11010552	INOX PLATE FOR TANK "L.+120MM"
17	NE05.061	MICROSWITCH CHERRY D413 .V3LD	66	U324.006	NUT M4 FLANGED INDENTED BASE
18	129768902	TC SCREW M5X16 UNI 6107 ZNP	67	11021497	MAGNET SUPPORT PHEDRA
19	U208.004	TOOTHED WASHER 3,8X7,5 UNI 370	68	9991.189	MAGNET D.9,5X2 2000 GAUSS
20	11008858	LOCK BUSH	69	11008363	LATERAL INSERT HIGH TANK 5P07
21	11021494		70	11013019	COFFEE GRILL FOR PHEDRA RAISED
21	11007025	5P07 RIGHT INTERNAL LATERAL PANE			
22	11009319	BUSH FOR BRACKET UPPER DOOR			
23	0875.442	SEAL AD U L.100 MM			
24	0875.441	SEAL AD U L.40 MM			
25	11008481	BOILER/E/V IN SUPPORT PLATE			
25	11013989				
26	9111.411	RUBBER BUFFER FOR COMPARTMENT			
27	11008834	SOLENOID VALVE			
28	NE16.002	GROMMET D.11X20,5XH.7			
29	WGAND01/016	1/4" GAS NUT			
30	NV99.007	PRESS. REDUCER .1BAR 1/4 MRABIT			
31	9181.404	REDUCTION MF 1/4"X1/8" TEA			
32	9181.401	ANGULAR TOOTHED M 1/8 TUBO 6 TEA			
33	U208.003	TOOTHED WASHER 5,1X9 BRU			
34	U043.021	screw TCBC M5,0X8 UNI 7687 GA			
35	15001721				
36	11010310	5P07 RIGHT EXTERNAL LATERAL PANE			
36	11021358				
37	11010228	RAISED 120MM 5P07			
38	11013017				
39	11013018				
40	11022525				
41	NV01.015	FOOT D.22 H.18 M6			
42	9991.206	MAGNET D.13 H.4,5 M5 MALE			
43	11013006	SPECIAL SPRING			
44	11013321	COIN CASE PHEDRA			
45	11007012	BEIGE DRAWER TRUST			
46	11008461	INOX PLATE FOR WATER TUB			
47	11007798	LATERAL INSERT TANK BLK 5P07			

E19021

Pos	Article-Nr.	Description	Pos	Article-Nr.	Description
47	11023135	LATERAL INSERT TANK BLK PHEDRA			
48	11022258				
49	11022257				



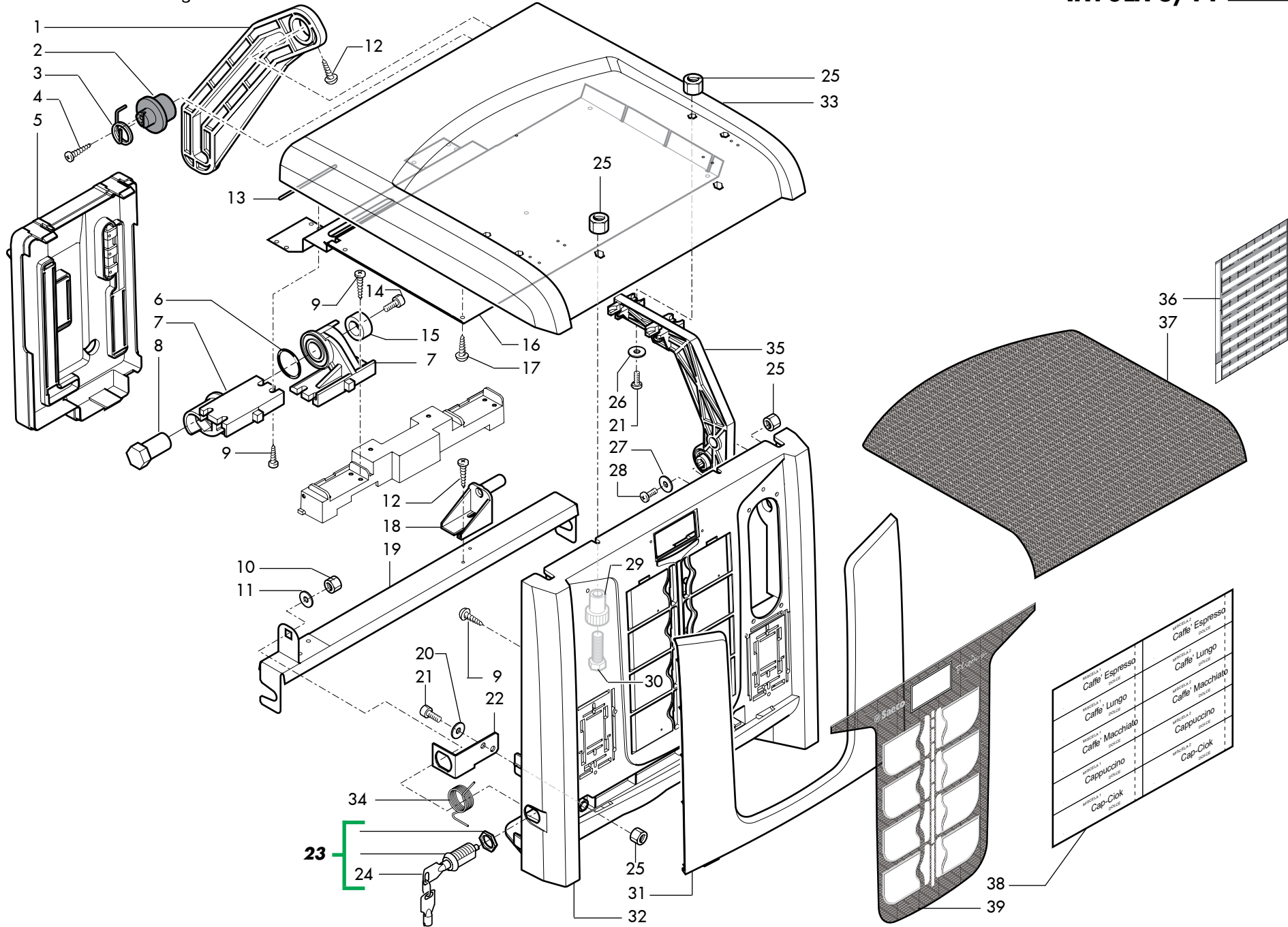
E19021

Pos	Article-Nr.	Description	Pos	Article-Nr.	Description
1	9121.009.00A	MOTOR WITH FAN 230V			
1	9121.009.00F	MOTOR WITH FAN 120V			
2	11007018	5P07 SOLUBLES MOTORS SUPPORT			
3	U207.002	PLAIN WASHER 4,3X9 UNI 6592			
4	U302.003	GALV.NUT HEXAGONAL M4 UNI 5588			
5	U116.006	screw AUT.PT TCB 3,5X12 WN 14			
6	129583102	SCREW TCB M4X12 AUTOFORMING ZN-B			
7	11023377				
8	12001070	POLYCAP COVER LPN600-053-IDPE			
9	11008350	UPPER HINGES PLATE			
10	11007010	5P07 MAIN ASSEMBLING PLATE			
11	NE05.002	MICROSWITCH			
11	NE05.059	MICROSWITCH SAIA WITH WHEEL L=2			
12	9161.202.150	GREY GROUNDS MICRO COMPENSATOR M			
13	9161.221	SPRING GROUND.MICROSUPP.COMPENSA			
14	11011159	FOOT RUBBER 85SH FOR 5P07			
15	11023088				
16	U116.005	screw AUT.PT TCB 3,0X8 WN 14			
17	11011575				
18	11011573				
19	11008835	COFFEE TANK ASSEMBLY 5P07			
20	15001860				
21	NE05.018	MICROSWITCH			
22	U302.001	nut HEXAGONAL M5 UNI 55			
23	U110.003	screw AUT.TCB 3,5X9,5 DIN 7981			
24	U207.004	PLAIN WASHER 4,3X16 UNI 6592			
25	11011330				
26	U142.008	PANELVIT TSP 3,5X12 DIN 7505 A			
27	11007019	CONVEYER ASP.3MIXER 5P07			
28	U005.017	SCREW TE M5,0X12 UNI 5739 G			
29	12001365				
30	11006046	PEG FOR BOILER			
31	11007799	BOX MIXERS ASPIRATION 5P07			
32	11013847				
33	11013846	ASS.TUBE CAPPUCCINATORE PHEDRA			
34	11013141	PHEDRA WASTE CONTAINER PLATE			
35	11008460	VAIN OF DRAIN COVER PLATE			
36	11011321				
37	11007011	5P07 NOZZLES SUPPORT			
38	11010482	H120 CONVEYOR 5P07			
39	11007015	5P07 COFFEE CONTAINER COVER			
40	11007014	COFFEE CONTAINER 5P07			
41	11010736	ASS.GUILLOTINE COFFEE			
42	11013988	PIN BRASS FOR CAPPUCCINATORE TEA			
43	140322500	OR 2118 IN NITRIL RUBBER			
44	142801650	BLACK CAPPUCCINAT.CASING LID NEU			
45	11007252	SILICONE TUBE 2,5X5 60SH L.600 M			
46	9991.122.050	CONN. FOR CAPPUCCINATORE BLACK			
47	142901350	BLACK CAPPUCCINATORE CASING			
48	11021694	BLACK CAPPUCCINATORE ASS.			
49	12000431	BRUSH D.12			

E19021

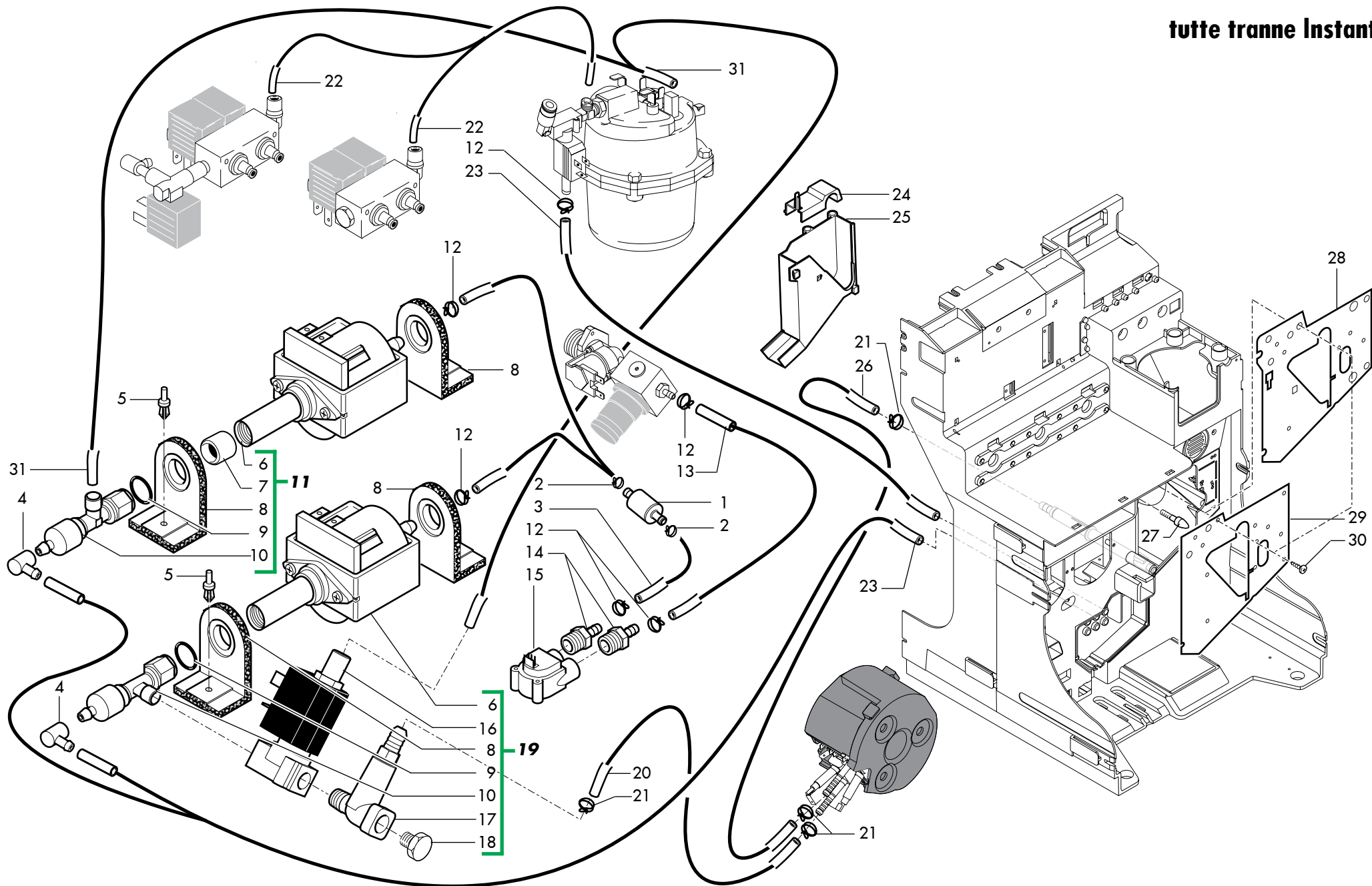
Pos	Article-Nr.	Description
50	12000430	BRUSH D.6

Pos	Article-Nr.	Description
-----	-------------	-------------



E19021

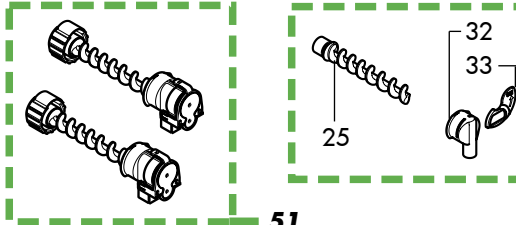
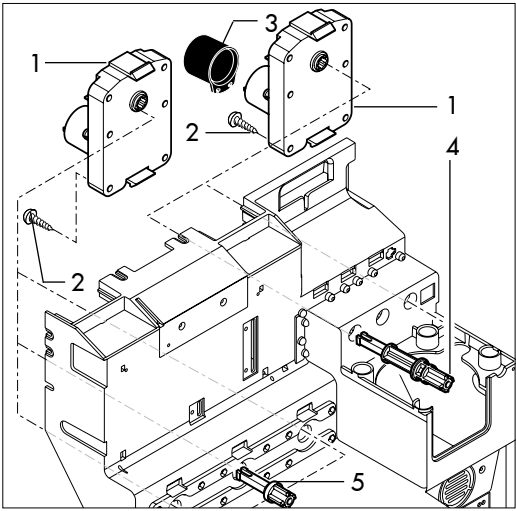
Pos	Article-Nr.	Description	Pos	Article-Nr.	Description
1	11009374				
2	11009376				
3	11009556	SPRING RIGHT FOR DOOR STIRRUP 5P			
4	U111.001	screw AUT.TSP 2,9X9,5 DIN 7982			
5	11007795	CPU CARTER BLK 5P07			
6	NM01.026	OR 121 SILICONE			
7	11007023	HINGE FOR ROOF 5P07			
8	11008967	PIN FOR HINGE 5P07			
9	U116.006	screw AUT.PT TCB 3,5X12 WN 14			
10	U302.006	nut HEXAGONAL M10 UNI 55			
11	U208.008	TOOTHED WASHER 10,5X18 UNI 370			
12	U110.003	screw AUT.TCB 3,5X9,5 DIN 7981			
13	0875.441	SEAL AD U L.40 MM			
14	U023.019	SCREW TCEI M8X20 UNI 5931 ZIN			
15	11010862	BUSH HINGE 5P07			
16	11011549				
17	U109.003	SCREW TCB 3,5X9,5 DIN 7981 C NIC			
18	11008351	CLOSING DOOR PLATE SUPPORT			
19	11008487	SUPPORT PLATE FOR CLOSING DOOR			
20	U208.006	TOOTHED WASHER 6,4X11 UNI 370			
21	U043.015	screw TCBC M5,0X12 UNI 7687 GA			
22	11008488	LOCK REINFORCING PLATE			
23	12001011	LOCK MERONI 3351MM.3190SX1U KA-4			
24	1482.R02	KEY FOR DOOR MB DA 8P			
25	U301.002	HEXAGONAL NUT M5 UNI 5587			
26	U207.001	PLAIN WASHER 5,3X10 UNI 6592			
27	U212.005	WASHER 5,3X20X1,5 GALV.			
28	U043.014	screw TCBC M5,0X20 UNI 7687 GA			
29	9111.307.270	STIRRER PLATE KNOB 8P			
30	129723002	TE SCREW M5X27 UNI 5739 ZNP			
31	11007797	FRONTAL PANEL SP 5P07			
32	11007021	5P07 UPPER DOOR BLK			
32	11023131				
33	11023133				
33	11007020	5P07 UPPER DOOR BLK			
34	11012649				
35	11009375				
36	0775.989	PRICE LABELS WHITE EURO			
37	11008739	ADHESIVE FRONT PLATE FOR UPPER C			
38	15001435	PRODUCTS LABEL'S SHEET 5P07 ITA			
38	15001551				
38	15001552	PRODUCTS LABEL'S SHEET 5P07 FRA			
38	15001553				
38	15001554				
38	15001555				
38	15001556				
38	15001889				
39	11008740	ADHESIVE FRONT PLATE FOR TOUCH P			



E19021

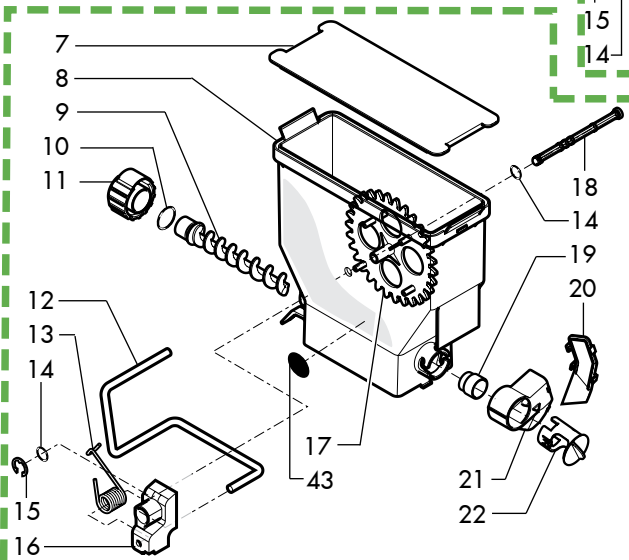
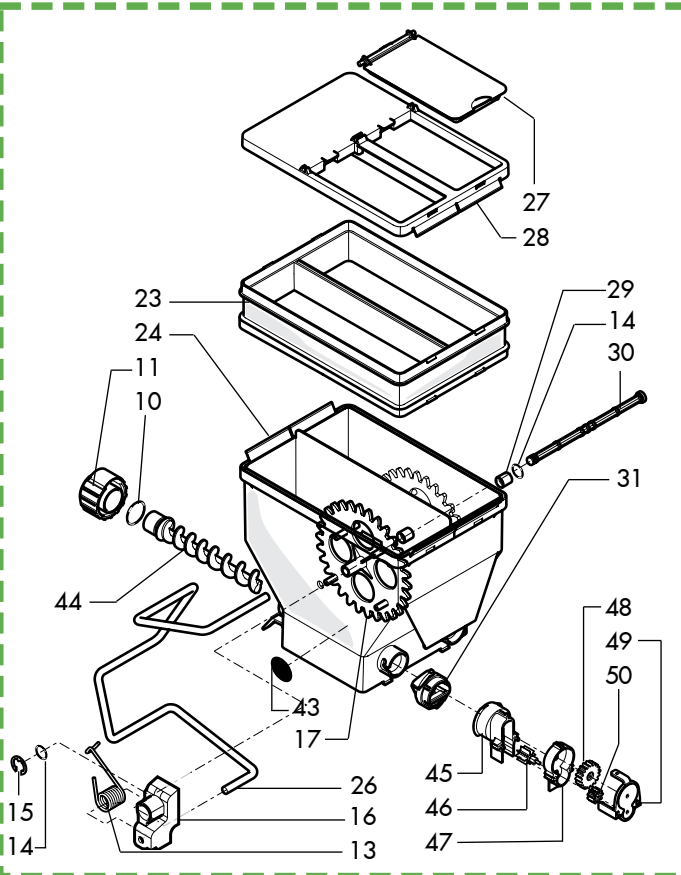
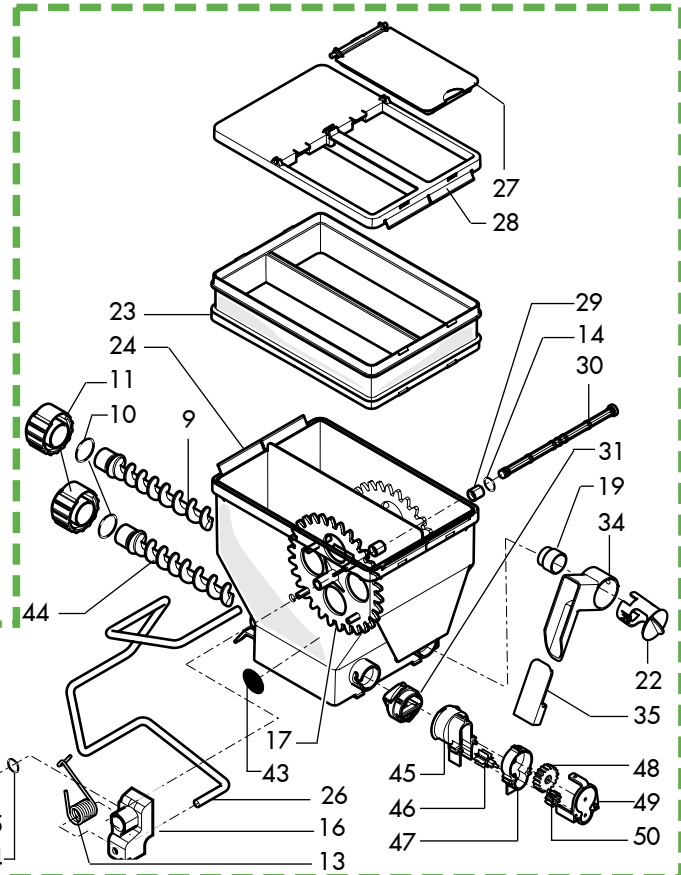
Pos	Article-Nr.	Description
1	9991.007	NUT FOR CONNECTOR 1/8"
2	9991.008	EXTERNAL BUSH D.6
3	9991.009	INSIDE BUSH D.4
4	147920150	90° INLET PUMP CONNECTOR
5	NF11.005	RIVET ITW D.5,5
6	9070.034.00F	ULKA PUMP EP7 120V
6	9070.042.00A	ULKA PUMP EX5 SD1
7	9071.098	REINFORCEMENT FOR ULKA PUMP
8	149185850	EATON PUMP SUPPORT 4002012 MAGIC
9	140321961	OR 2031 IN TERMOIL
10	11005590	SAFETY VALVE/NON RETURN ASS. NEW
11	11008938	ASS.PUMP 230V 5P07
11	11013718	
12	NV99.077	TUBE-TIGHTENING CLAMP D=9.8/10.6
13	9972.342	SILICONE TUBE FABRIC 5X9 L.160M
14	11009215	RUBBER HOLDER FOR FILTER
15	NV99.033	DIGMESA TURBINE IN PLASTIC
16	11021437	
17	11008017	SAFETY VALVE ASS. 3,5 -4 BAR
18	NR07.040	BRASS CAP 1/8 GAS CONICAL
19	11021493	
20	11021691	SILICONE TUBE 5X9 L.360 MM
21	NV99.087	BAND D=11/11,6
22	9971.015	TEFLON TUBE 4X6 L.2 MT
23	9972.022	SILICONE TUBR 5X8 L.2MT
24	9161.262.060	DRIP CHANNEL COVER
25	9111.597.050	COFFEE DISCHARGE CHANNEL SHORT
26	11021690	
27	9011.005	PEG FOR BOILER
28	11013925	
29	11007017	DRIP CANAL PLATE 5P07
30	U142.008	PANELVIT TSP 3,5X12 DIN 7505 A

Pos	Article-Nr.	Description
-----	-------------	-------------



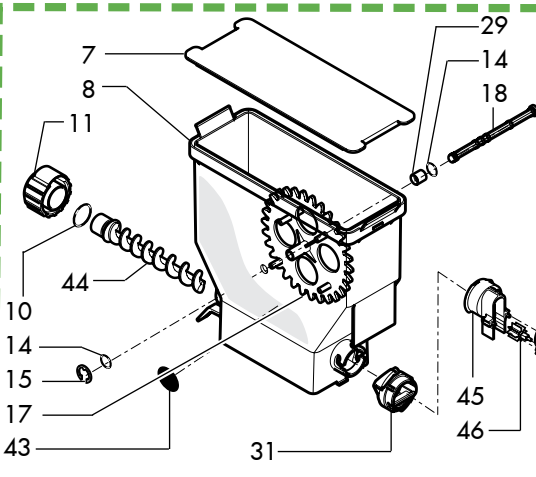
51

6



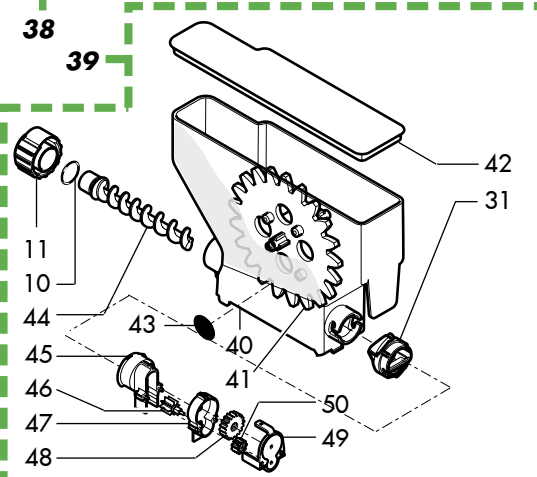
36

37



38

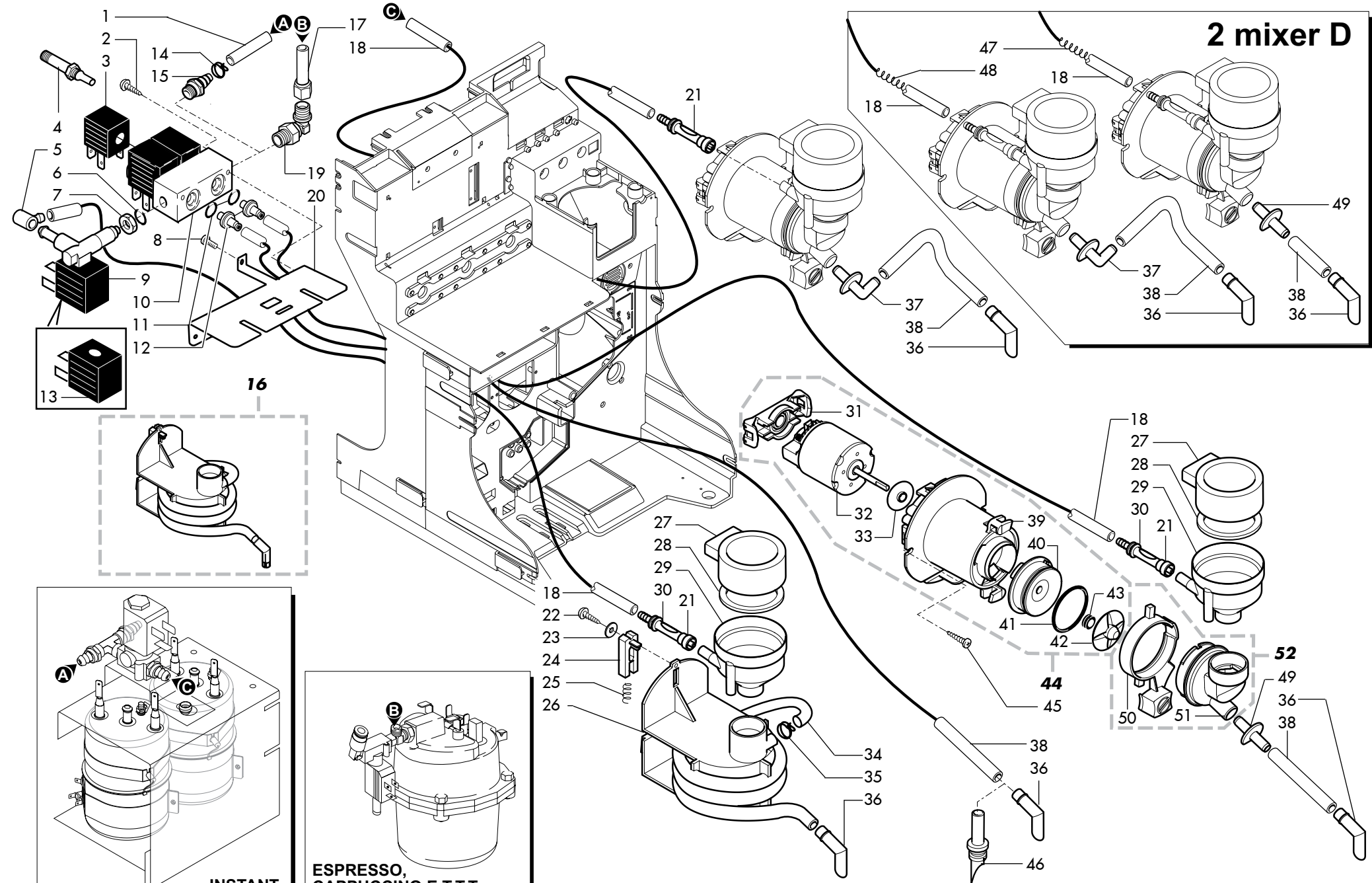
39



E19021

Pos	Article-Nr.	Description
1	9121.216.00P	RATIOMOTOR 90 RPM 24V
2	U110.008	screw AUT.TCB 3,5X22 DIN 7981
3	9121.155	HOOD FOR RATIOMOTOR
4	11011561	
5	9111.586.050	PIN FOR MOTORS KENTA
6	11007162	5P07 ASSEMBLED DOUBLE TANK
7	11007974	COVER CONTAINER SOLUBLE
8	11001576	BASE CONTAINER SINGLE SOLUBLE
9	11001658	SCROLL SCREW
10	NM03.013	OR 2,3X15 NBR
11	11012130	BACK BUSH REINFORCE
12	11007975	WIRE AGITATOR CHOCOLATE CONTAINER
13	9111.731	SPRING
14	NM03.022	OR ORM 0060-10 NBR
15	U701.003	SNAP RING 7 UNI 7434
16	11007155	AGITATOR SUPPORT
17	9111.702	WHEEL DOUBLE CONTAINER
18	11001580	PIN WHEEL CONTAINER SINGLE SOLUBLE
19	11001654	BUSH CONTAINER
20	11013386	
21	11013385	
22	9111.457.060	BUSH FOR LEFT/RIGHT DUCT COSMEC
23	11007016	40MM SOLUBLES CONTAINER PROLONG
24	9111.680	BASE CONTAINER DOUBLE SOLUBLE
25	9111.701	SCROLL SCREW DOUBLE CONTAINER
26	9111.736	WIRE AGITATOR
27	9111.683	SOLUBLE COVER
28	9111.682	COVER CONTAINER DOUBLE SOLUBLE
29	9111.704	BUSH FOR WHEEL
30	9111.703	DOUBLE PIN FOR WHEEL
31	9111.630.060	BUSH FOR POWDERS TANK
32	9111.629.060	Aperture for solubles hopper
33	9111.338.270	BULKHEAD FOR APERT. CLOSURE ORAN
34	9111.425.060	POWDER DUCT
35	9111.428.060	PLUG FOR LEFT-RIGHT DUCT
36	11013493	ASSEMBLY SOLUBLES CONTAINER PHED
37	11007972	ASSEMBLY SOLUBLES CONTAINER
38	11023802	
39	11014116	
40	11011559	
41	11013004	
42	11011560	

Pos	Article-Nr.	Description
-----	-------------	-------------

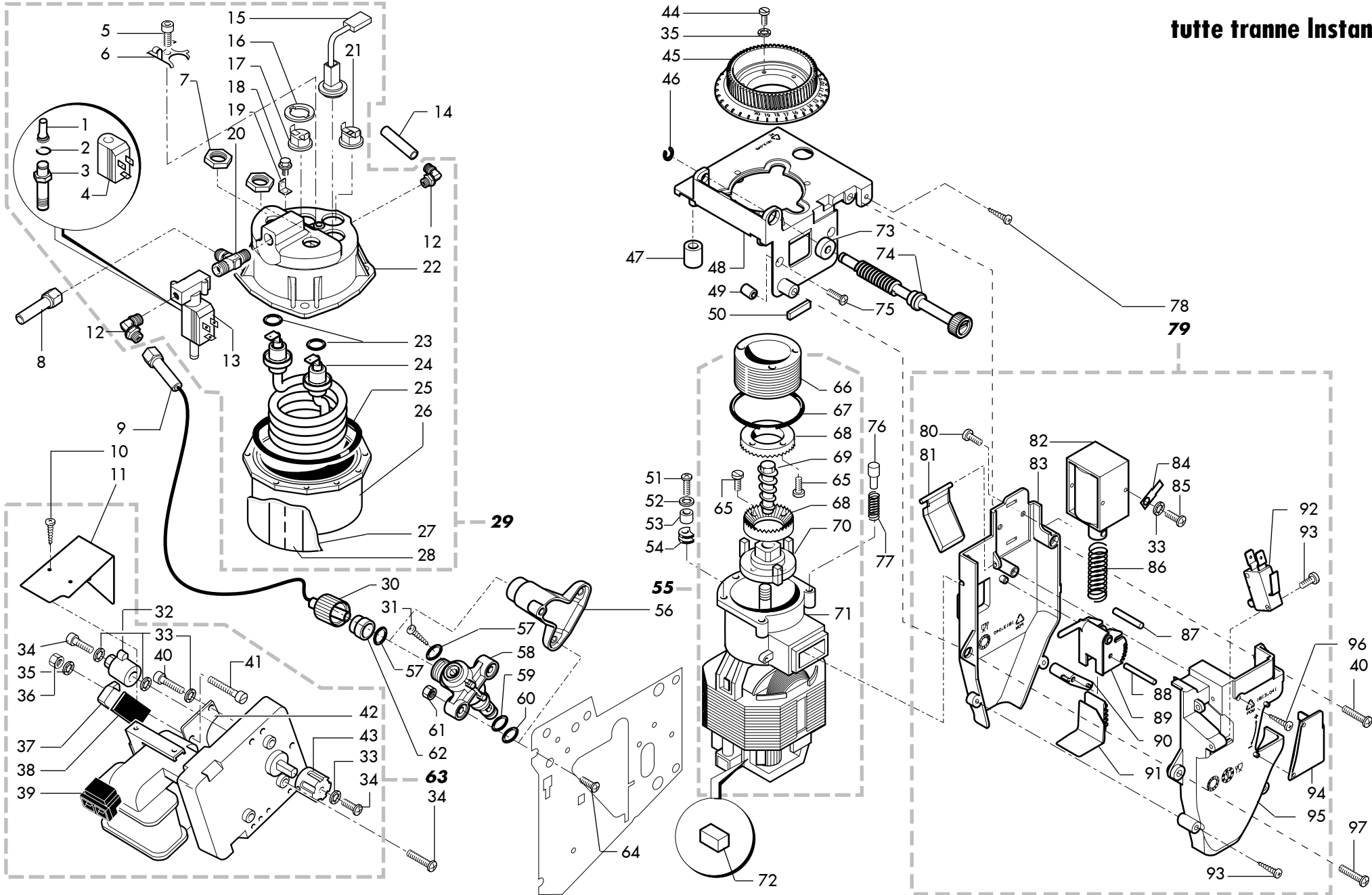


E19021

Pos	Article-Nr.	Description	Pos	Article-Nr.	Description
1	9972.343	SILICONE TUBE FABRIC 5X9 L.95 M	53	9110.027.060	MIX CASING ASS.
2	129516803	SCREW TCB3,5X19 DIN 7981 NICK			
3	20005373	SOLENOID X OLAB 24V DC 6000BH/BO			
4	20005374	ASS.NUCLEUS 6000BH/BODN X 110092			
5	147920150	90° INLET PUMP CONNECTOR			
6	140321462	OR 2018 IN SILICONE			
7	9991.035	NUT 1/8 H 4.5			
8	NR07.040	BRASS CAP 1/8 GAS CONICAL			
9	9121.146.00P	OLAB SOLENOID VALVE 2 WAY DC			
10	11007165	2 E/V 3 WAYS 5P07 BLOCK			
11	NM01.004	OR 2025 SILICONE			
12	9991.006	RUBBER HOLDER CONNECTOR			
13	0862.R03	COIL FOR SOLENOID VALVE 2 WAY			
14	NV99.077	TUBE-TIGHTENING CLAMP D=9.8/10.6			
15	NR07.013	STD TOOTHED CONN. M 1/8X06 NICK			
16	11008891	ASS.MIXER THE' 5P07			
17	9971.015	TEFLON TUBE 4X6 L.2 MT			
18	9972.022	SILICONE TUBR 5X8 L.2MT			
19	NR10.014	CONNECTOR 1/8" D.6 REVOLVING			
20	11007790	E/V 5P07 BLOCK PLATE			
20	11022750				
21	11022846				
22	11011158	SPRING FOR TUBE L.45MM			
23	U116.005	screw AUT.PT TCB 3,0X8 WN 14			
24	U207.004	PLAIN WASHER 4,3X16 UNI 6592			
25	9111.209.060	CURSOR FOR SPIRAL MIXER FIXING			
26	9111.211	SPRING FOR MIXER CURSOR			
27	9111.643.060	RAPID FIXING MIXER			
28	9111.010.060	LID FOR FUNNEL BROWN			
29	9111.011.060	SEAL FOR FUNNEL BROWN			
30	9111.009.060	FUNNEL FOR POWDERS BROWN			
31	1863.A07	ESPRESSO NOZZLE			
32	9111.771.270	MOTOR COUPLING ORANGE RAL			
33	9121.248.00P	MIXER MOTOR '05 24V DC			
34	9111.773.060	MOTOR PROTECTION RING			
35	9972.320	SILICONE TUBE 7X11 L.2000MM			
36	NV99.072	HOSE CLAMP D. 11.6/12.3			
37	1813.109.050	NOZZLES			
38	9111.164	CONNECTOR FOR MIXER			
39	9972.057	SILICONE TUBE BROWN 5X8 L.2000			
40	9111.769.150	MIXER FLANGE			
41	9111.770.060	COVER MIXER FLANGE			
42	NM03.012	OR ORM 0320-25 NBR			
43	9111.772.060	DISK FAN			
44	NM05.015	V-RING MIXER '05			
45	9110.160.06P	ASS.MIXER '05 24V DC			
46	U116.006	screw AUT.PT TCB 3,5X12 WN 14			
47	9111.348	STRAIGHT DISPENSING NOZZLE			
48	11013723				
49	11013722				
50	9111.232.060	STD TUBE HOLDER SLEEVE			

E19021

Pos	Article-Nr.	Description	Pos	Article-Nr.	Description
50	9111.233.060	DECAFF.TUBE HOLDER SLEEVE			
51	9111.230.270	MIXER LOCKING RING NUT ORANGE R			
52	9111.227.060	MIXER CASING			

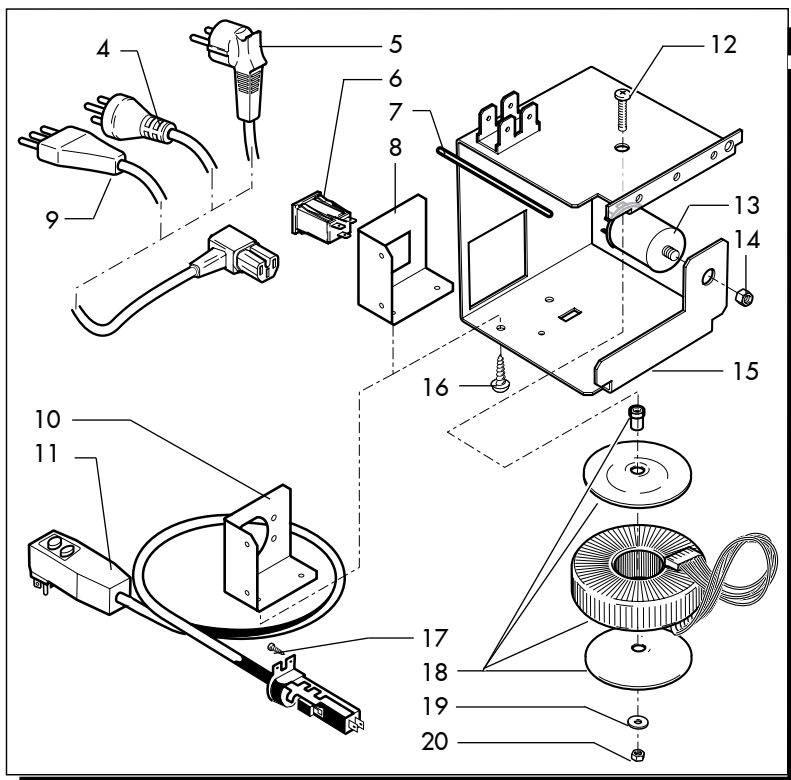
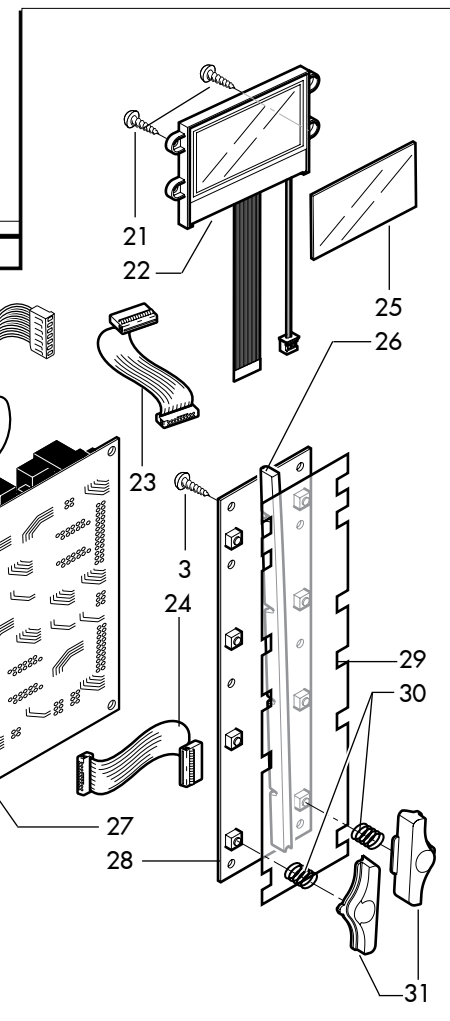
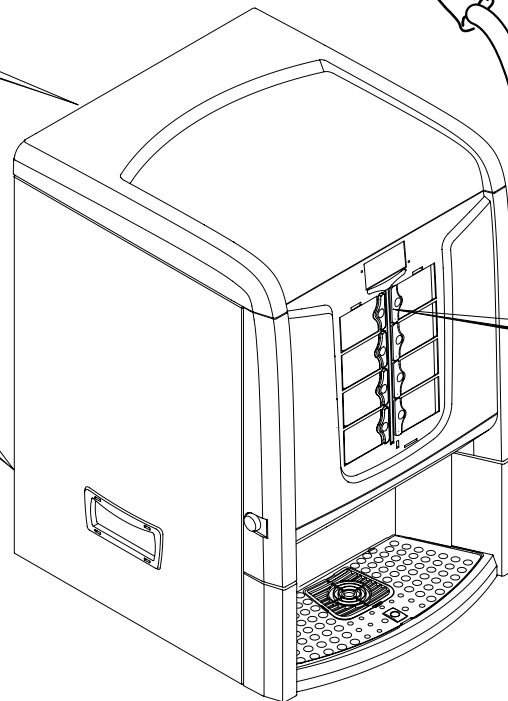
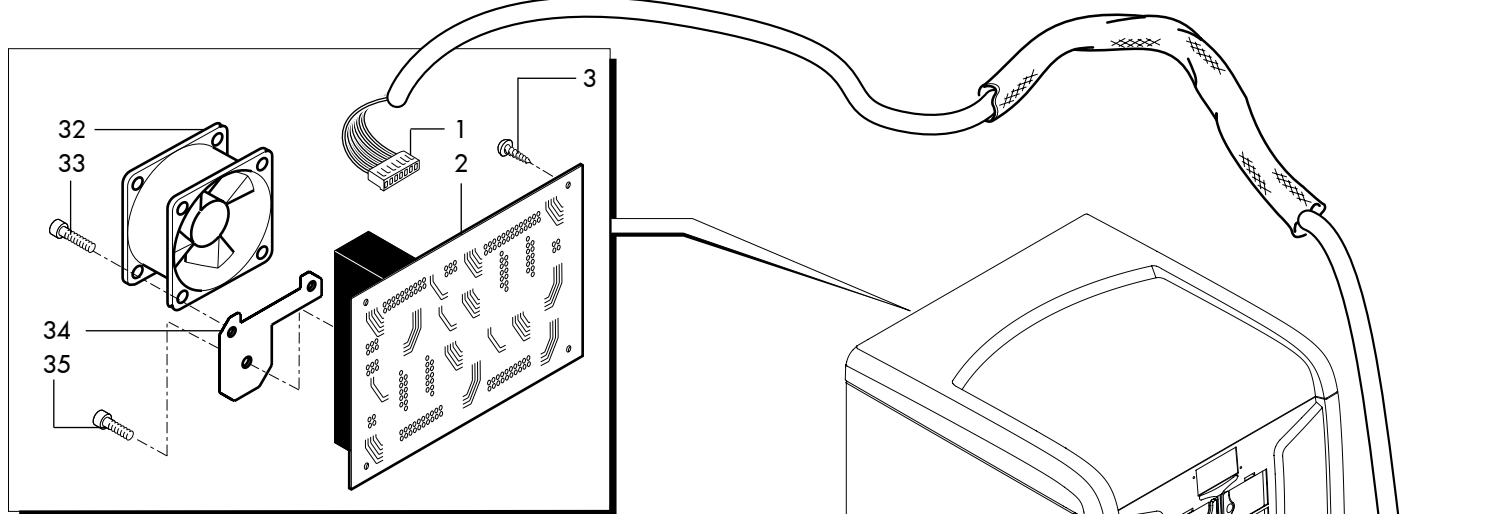


E19021

Pos	Article-Nr.	Description	Pos	Article-Nr.	Description
1	0862.R16	ASS.NUCLEUS	50	1813.177	SUPPORT SEAL
2	0862.R17	ORM 0-100 10X1.5 NBR UP COIL	51	U043.004	ZN-B TCB SCREW M4X16
3	0862.R15	ASS.TUBE 3/2 WAYS	52	U203.001	PLAIN WASHER 4,3X8 UNI 1749
4	0862.R07	SOLENOID FOR MM VALVE 3 WAY 24V	53	9141.003	SPACER FOR RUBBER
5	12001052	SCREW TCEI M4,0X6 DIN 912 ZIN	54	9991.005	RUBBER FOR COFFEE GRINDER
6	226830200	RETAIN.SPRING 3 THERM. +THERMAL	55	11013715	
7	9991.029	NUT FOR RESISTOR	55	11009741	ASS.MOTOR FOR COFFEE GRIND 220/2
8	9971.051	TEFLON TUBE 4X6 L.250 MM	56	11013431	
9	9991.008	EXTERNAL BUSH D.6	57	140321462	OR 2018 IN SILICONE
10	9991.007	NUT FOR CONNECTOR 1/8"	58	11005370	PIN FOR MUFF
11	9991.009	INSIDE BUSH D.4	59	11013173	OR ORM 0090-20 FKM 80 FD GREEN P
12	NR10.014	CONNECTOR 1/8" D.6 REVOLVING	60	11013174	OR ORM 0050-20 FKM 80 FD GREEN P
13	9121.145.00P	ELECTROVALVE 3 WAYS	61	U302.003	GALV.NUT HEXAGONAL M4 UNI 5588
14	11009785	TEFLON TUBE 3X6 L.250 MM	62	11005741	CONNECTOR D.6
15	11000316	ASSEMBLY HORIZONTAL SENSOR SG200	63	11008960	RATIOMOTOR 230V 5P07
16	9991.085	THERMOSTAT FIXING WASHER	63	11023412	
17	NE09.021	THERMOSTAT 150°NC FASTON 90°	64	U044.016	screw TSP M4,0X16 UNI 7688 GA
18	U023.020	SCREW TCEI M6X20 UNI 5931 ZIN	65	129761402	TC SCREW M3X8 UNI 6107 ZNP
19	NE15.031	MALE TONGUE PLAIN 6,3 D.6,3	66	9141.008	KNOB ADJUSTMENT SCREW
20	9991.211	""T"" CONNECTOR FOR BOILER	67	140321560	OR 3187 IN NBR
21	189428700	THERMOSTAT 175° 1NT-15L-5126	68	126520119	GRINDER FOR MOTOR TYPE BATTISTI
22	11002259	UPPER DOSER CASING M6 TEA	69	9141.001	BRASS NCREMENT SCREW MC
23	11000972	OR 3050 FKM 80 FD PEROXIDICA	70	9141.007	FAN
24	11007580	RES CALD. V230 W1000 INC.800	71	9140.002.00A	MOTOR ASS.WITH CAP 230V
24	11007593	RES CALD. V120 W1000 INC.800	71	9140.002.00F	MOTOR ASS.WITH CAP 120V
25	NM04.010	OR ORM 0730-40 FPM 70+-5 IRHD BL	72	0701.R34	MOTOR BRUSH
26	9011.226	UPPER OVERSIZE CASING M6 VENDING	73	1813.159	ANTIVIBRATION RUBBER
27	9011.254	BRASS BOILER ISOLATOR	74	1813.104.A20	ADJUSTMENT SCREW WITH TUBE HOLD
28	9991.161	WATER +STEAM BOILER STRAP L=250	75	U044.022	screw TSPC M5,0X8 UNI 7688 GA
29	11013719		76	9141.005	KNOB PIN
29	11012443	BOILER ASS.PHEDRA 230V	77	126769118	SPRING FOR KNOB STOP PIN (H=19)
30	11005743	KNURLED FEMALE HAND BOLT M14	78	U116.006	screw AUT.PT TCB 3,5X12 WN 14
31	U109.037	screw AUT.TCB 4,8X13 DIN 7981	79	1813.A10.A2A	DOSER ASS. 6-11 GR.
32	9991.037	CAM FOR RATIOMOTOR 1 MICRO	79	1813.A10.A2F	DOSER ASS. 6-11 GR.120V UL
32	11003525	CAM COFFEE GROUP FRESH BREW	80	129851921	TSP SCREW M3X6 UNI 7688 SS
33	128310404	WASHER UNI 8842 A4 BURNISHED	81	1813.042.A20	DISPENSER PALLET
34	129824002	TCB SCREW M4X10 UNI 7687 ZNP	82	9121.235.00A	ELECTROMAGNET FOR DISPENSER WITH
35	U208.002	TOOTHED WASHER 3,3X5,8 UNI 370	82	9121.235.00F	ELECTROMAGNET X DISPENSER W/NUCL
36	U302.002	nut HEXAGONAL M3 UNI 55	83	1813.040.A20	DISPENSER SHELL
37	NE05.002	MICROSWITCH	84	NE15.003	MALE TONGUE PLAIN 6,3 D.5,2
38	9991.014	CARD FOR MICRO SWITCHES	85	U043.020	screw TCBC M3,0X6 UNI 7687 GA
39	9121.008.00A	RATIOMOTOR 30 PACK 230/240V	86	1813.127	SPRING FOR ELECTROMAGNET
39	9121.008.00F	RATIOMOTOR 30 PACK 120V	87	1813.092	PIN
40	129825502	TCB SCREW M4X25 UNI 7687 ZNP	88	1813.091	PIN FOR DISPENSER REGULATION
41	U034.003	screw TCI M3,0X20 UNI 6107 GAL	89	1813.043.A20	DISPENSER REGULATION
42	9991.015	PLATE FOR MICRO	90	1813.078.A20	ADJUSTMENT LEVER
42	11003524	PLATE FOR MICRO RATIOMOTOR	91	1813.044.A20	PALLET FOR REGULATION
43	9991.013	JOINT FOR RATIOMOTOR	92	NE05.062	MICROSWITCH + WHEEL
44	U043.007	screw TCBC M3,0X8 UNI 7687 GA	93	U116.004	screw AUT.PT TCB 3,0X16 WN 14
45	1813.103.A20	RING NUT OF GRIND REGULATION	94	1813.191.A20	DISPENSER COVER
46	U701.011	SNAP RING 5 UNI 7434	95	1813.041.A20	OUTSIDE SHELL DISPENSER

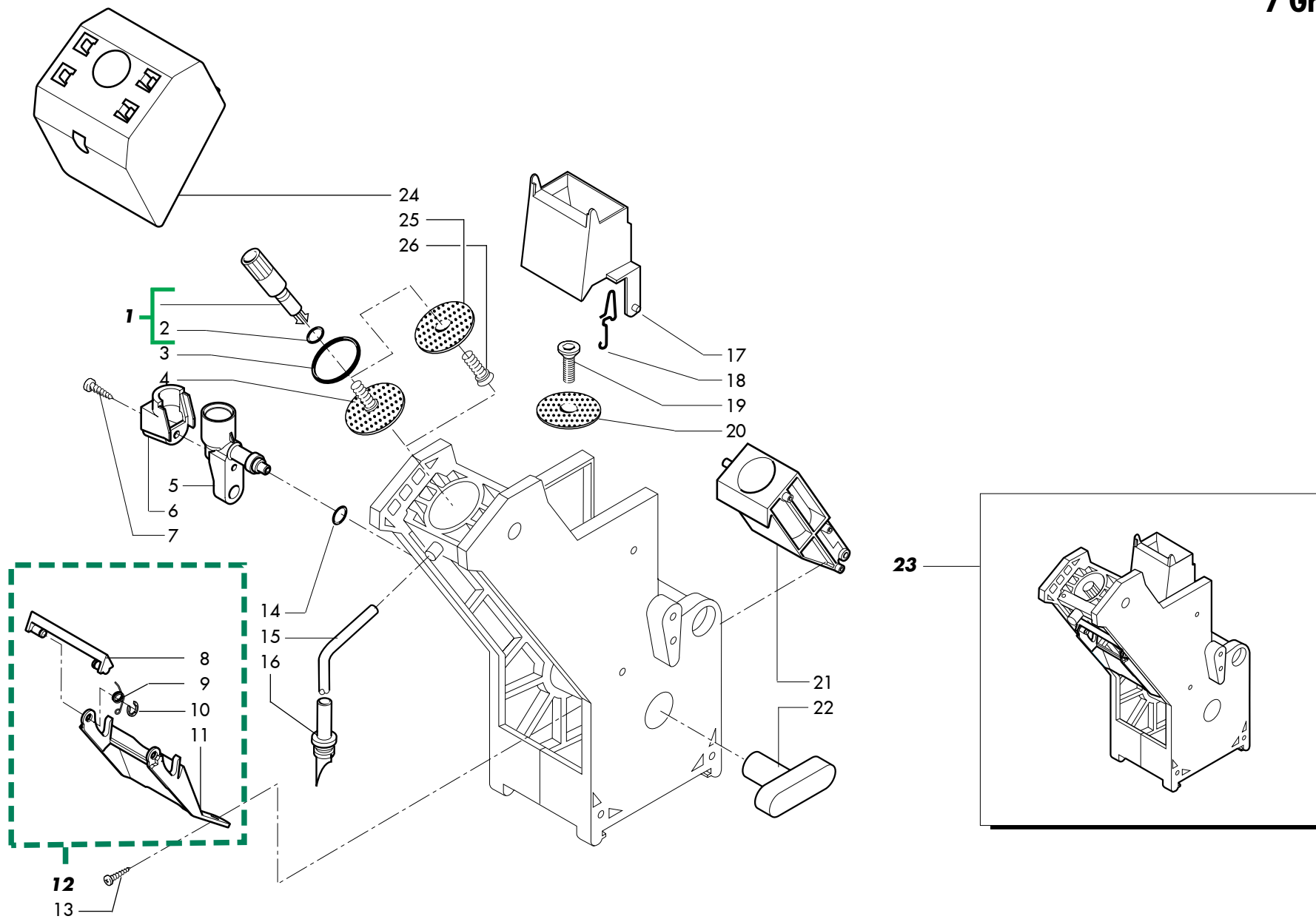
E19021

Pos	Article-Nr.	Description	Pos	Article-Nr.	Description
47	1813.046.050	RUBBER GRIND SUPPORT	96	129514003	SCREW TCB 2,9X22,2 DIN 7981 NICK
48	1813.045.A20	GRIND SUPPORT	97	U043.011	screw TCBC M4,0X12 UNI 7687 GA
49	1813.097.A20	SPACER			



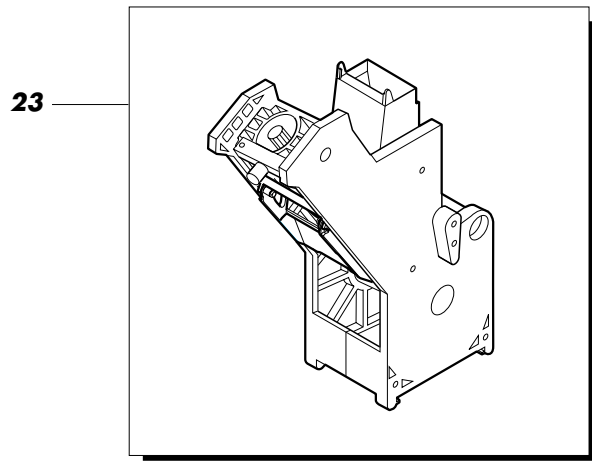
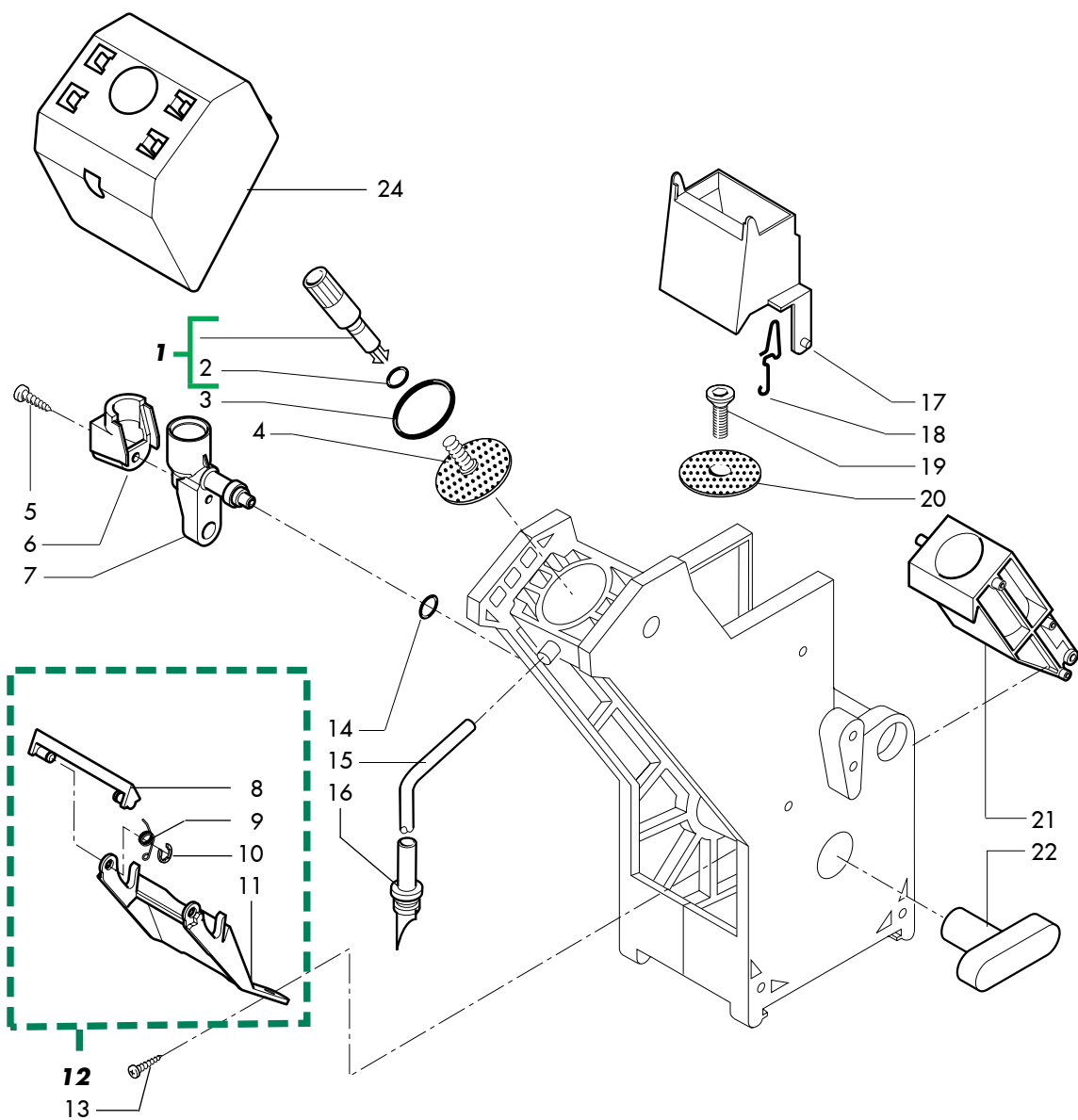
E19021

Pos	Article-Nr.	Description	Pos	Article-Nr.	Description
1	11009349	26 POLES FLAT CABLE 5P07			
2	11008068	DA5P-2007 PWR BOARD			
2	20006510	SPARE PART POWER CARD PHEDRA			
3	U116.006	screw AUT.PT TCB 3,5X12 WN 14			
4	NE01.053	CABLE AUSTRAL. +PLUG EN60320 C			
4	NE01.093	CABLE ARGENTINA + PLUG EN60320 C			
5	NE01.101	CABLE SCHUKO 16A EN 60320 C19			
5	NE01.050	CABLE SCHUKO WITH PLUG EN60320			
6	NE13.013	CUP SOCKET EN 60320 C 13			
6	NE13.055	CUP SOCKET 16A			
7	11023545				
8	11000546	POWER CONNECTOR SUPPORT			
8	11022784				
9	NE01.051	CABLE Switzerland WITH PLUG EN			
10	11003906	USA CABLE SUPPORT ELECTRONIC PAR			
11	11008469	POWER CABLE USA 3 POLE 15A			
12	U005.021	SCREW TE M8,0X50 UNI 5739 ZNP			
13	12001353	LOCKING SCREW ANTIDISTURB FILTER			
14	U302.007	nut HEXAGONAL M8 UNI 55			
15	11008417	ELECTRIC PARTS SUPPORT PLATE			
16	U110.003	screw AUT.TCB 3,5X9,5 DIN 7981			
17	U110.005	screw AUT.TCB 3,9X9,5 DIN 7981			
18	NE19.014	TOROIDAL TRANSFORMER 8P UL			
18	11011471	TOROIDAL TRANSFORMER 5P07			
19	U208.009	TOOTHED WASHER 8,4X15 UNI 370			
20	U310.005	nut SELF LOCK.M8 UNI 74			
21	129515603	***SCREW TCB 3,5X9,5 DIN 7981 NI			
22	12000884	GRAPHIC DISPLAY OCS			
23	11009350	14 POLES FLAT CABLE DISPLAY/CPU			
24	11009487	FLAT CABLE 24 POLES TOUCH/CPU			
25	11007792	DISPLAY GLASS 5P07			
26	11007796	5P07 LIGHT TRACK			
27	11014047				
27	11008979	CPU+SW AS.DA5P MY07			
28	11008194	MECH.KEYBOARD DA5P-2007			
29	11009520	DOOR LED BOARD DA5P-2007			
30	11010937	PVC SHEET FOR 5P07 KEYBOARD			
31	0875.151	SPRING FOR SLIDING PLATE			
32	11008352	PLASTIC BUTTON 5P07			



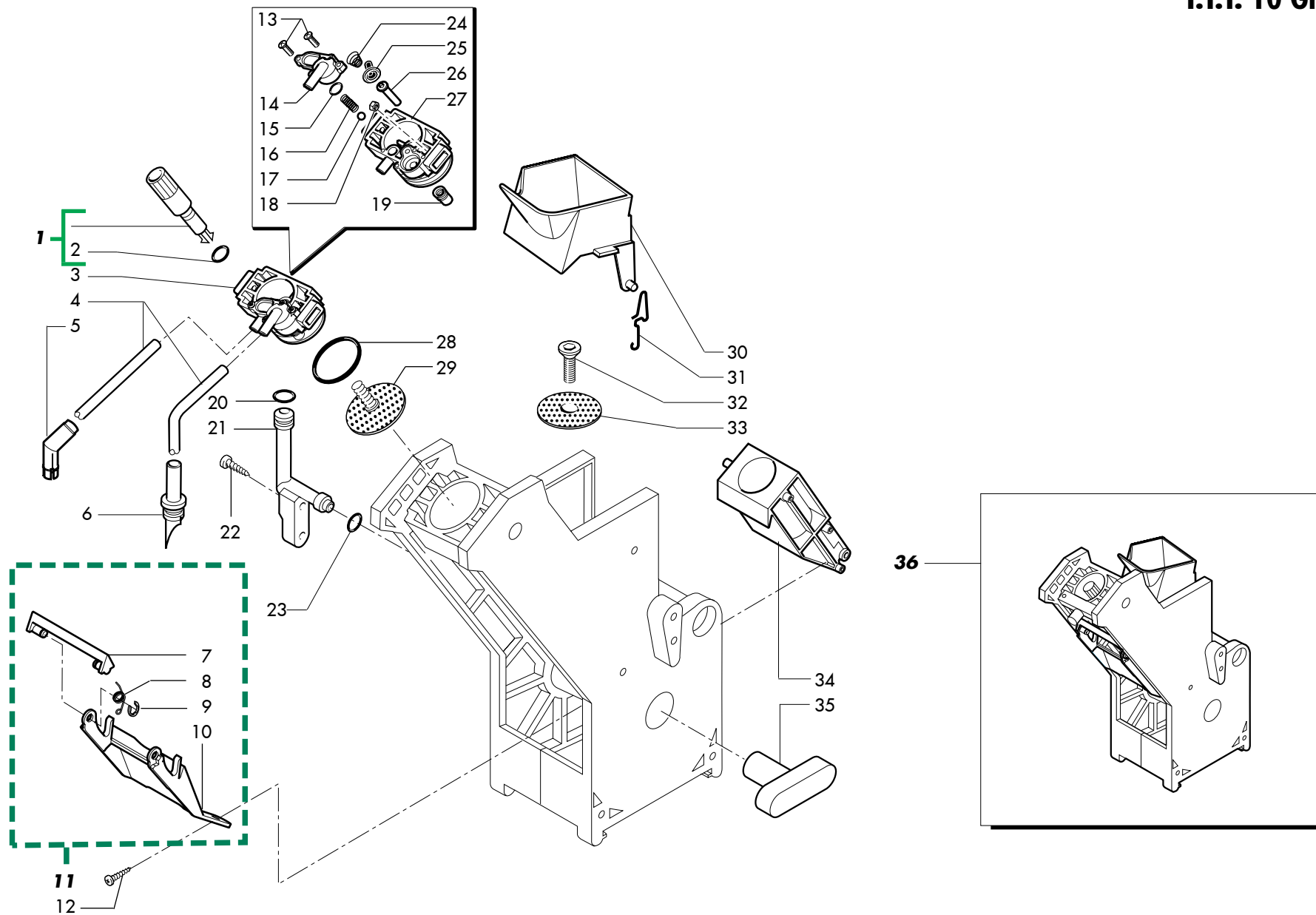
E19021

Pos	Article-Nr.	Description	Pos	Article-Nr.	Description
1	9169.A14.060	PIN FOR PERCOLATOR BROWN			
2	NM02.006	OR R5 TERMOIL			
3	140322061	OR 4112 IN EPDM			
4	324000100	SS PERCOLATOR D=34 SCREW FOR UN			
5	11005371	UNIT COFFEE MUFF			
6	11010013	CARTER FOR MUFF PREHEATING UNIT			
7	129512921	SCREW TCB TORX 10 AB 2,9X13 SHEE			
8	9111.537.060	BROWN SCRAPER COFFEE GROUP			
9	9111.520	SPRING FOR SCRAPER SECTION 0.6			
10	U701.006	SNAP RING 3,2 UNI 7434			
11	9111.539.060	FORK FOR SCRAPER			
12	9110.067.060	SCRAPER ASS.FOR CAPPUCCINAT. TU			
13	U110.013	screw AUT.TCB 3,9X6,5 DIN 7981			
14	140321462	OR 2018 IN SILICONE			
15	9972.057	SILICONE TUBE BROWN 5X8 L.2000			
16	9111.348	STRAIGHT DISPENSING NOZZLE			
17	322001201	MOBILE SCRAPER BROWN NARROW			
18	9161.425	SPRING FOR SCRAPER			
19	129851921	TSP SCREW M3X6 UNI 7688 SS			
20	324000200	SS PERCOLATOR D=34 FOR UNIT			
21	222711101	BROWN GROUND COFF.CONTAINER D=36			
22	9161.021.060	KEY FOR BREW UNIT BROWN			
23	11005421	BREW UNIT 7 GRAMS CRISTALLO600			



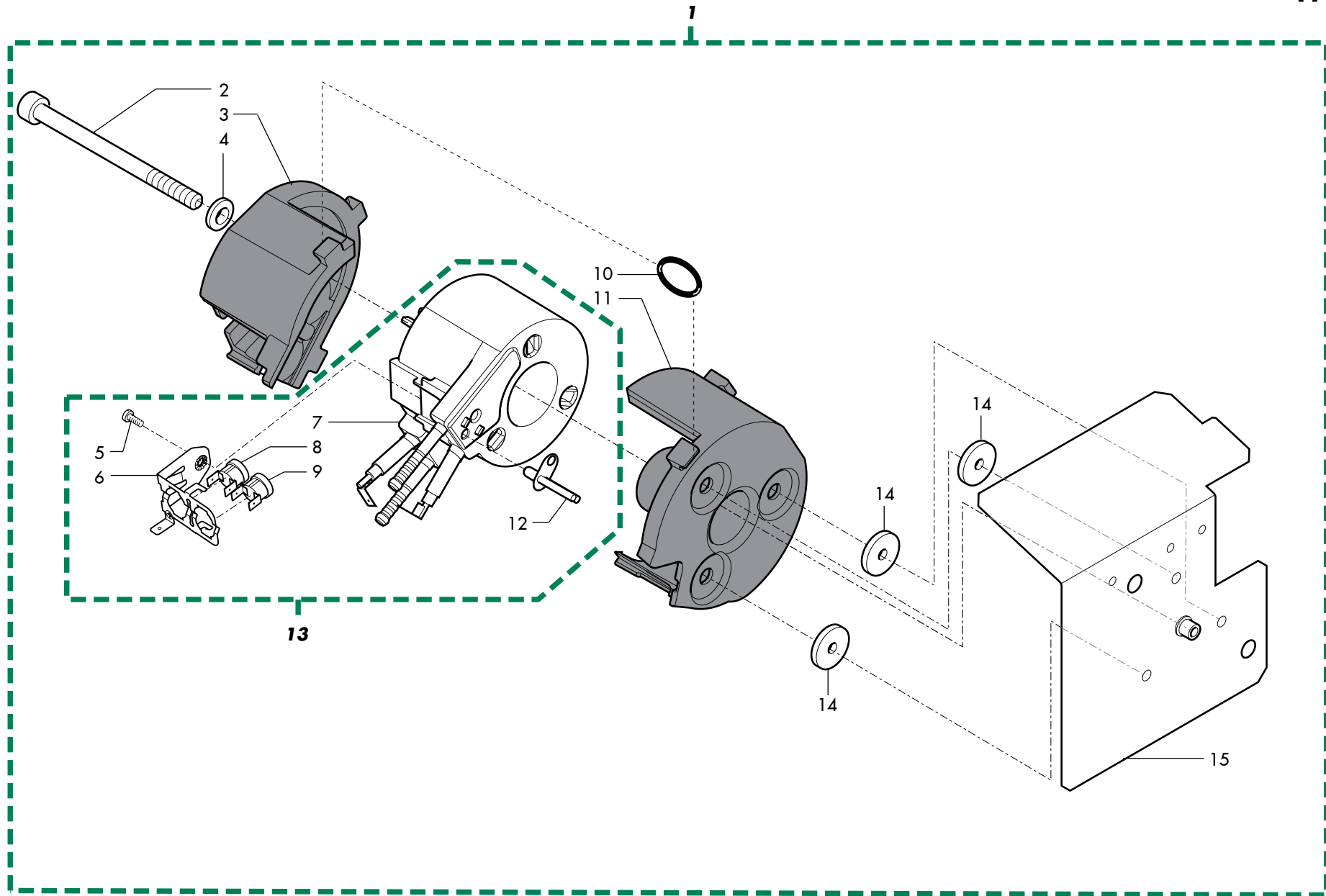
E19021

Pos	Article-Nr.	Description	Pos	Article-Nr.	Description
1	9169.A14.150	PIN FOP PERCOLATOR GREY			
2	NM02.006	OR R5 TERMOIL			
3	NM01.044	OR ORM 0320-40 IN SILICONE PTFE/			
4	9161.036	UPPER PERCOLATOR FOR UNIT			
5	129512921	SCREW TCB TORX 10 AB 2,9X13 SHEE			
6	11010013	CARTER FOR MUFF PREHEATING UNIT			
7	11005371	UNIT COFFEE MUFF			
8	9111.537.150	GREY SCRAPER COFFEE GROUP			
9	9111.520	SPRING FOR SCRAPER SECTION 0.6			
10	U701.006	SNAP RING 3,2 UNI 7434			
11	9111.539.150	FORK FOR SCRAPER			
12	9110.067.150	SCRAPER ASS.FOR CAPPUCCINAT. TU			
13	U110.013	screw AUT.TCB 3,9X6,5 DIN 7981			
14	140321462	OR 2018 IN SILICONE			
15	9972.057	SILICONE TUBE BROWN 5X8 L.2000			
16	9111.348	STRAIGHT DISPENSING NOZZLE			
17	322001259	MOBILE SCRAPER GREY NARROW			
18	9161.425	SPRING FOR SCRAPER			
19	129851921	TSP SCREW M3X6 UNI 7688 SS			
20	9161.037	LOWER PERCOLATOR FOR UNIT			
21	11002626	ASS. COFFEE CONTAINER GREY 9 GR.			
22	9161.021.060	KEY FOR BREW UNIT BROWN			
23	11005422	BREW UNIT 9 GRAMS CRISTALLO600			



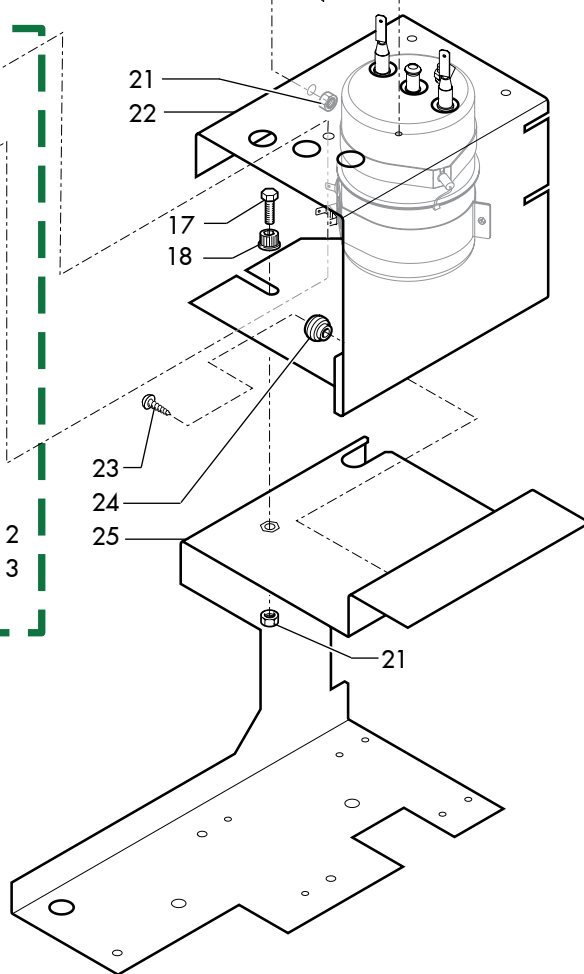
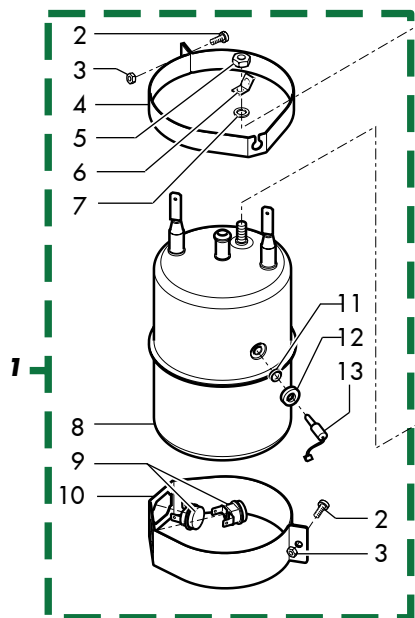
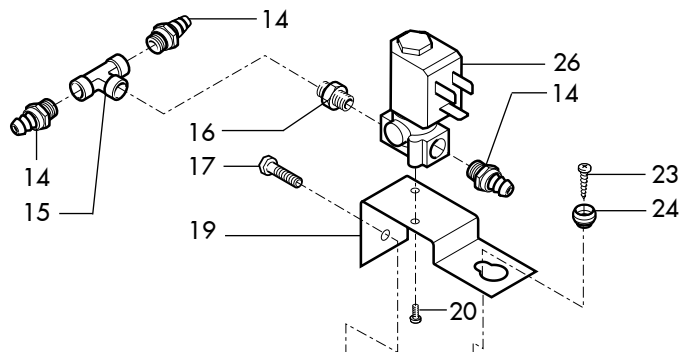
E19021

Pos	Article-Nr.	Description	Pos	Article-Nr.	Description
1	9169.A14.150	PIN FOP PERCOLATOR GREY			
2	NM02.006	OR R5 TERMOIL			
3	11007343	ASS.COUNTERPISTON FRESH-BREW			
4	9972.057	SILICONE TUBE BROWN 5X8 L.2000			
5	9111.349	ELBOW DISPENSING NOZZLE			
6	9111.348	STRAIGHT DISPENSING NOZZLE			
7	9111.537.150	GREY SCRAPER COFFEE GROUP			
8	9111.520	SPRING FOR SCRAPER SECTION 0.6			
9	U701.006	SNAP RING 3,2 UNI 7434			
10	9111.539.150	FORK FOR SCRAPER			
11	9110.067.150	SCRAPER ASS.FOR CAPPUCCINAT. TU			
12	U110.013	screw AUT.TCB 3,9X6,5 DIN 7981			
13	U109.030	screw AUT.TCB 2,9X16 DIN 7981			
14	11003470	LID X COUNTERPISTON FRESH-BREW			
15	NM02.013	OR ORM 0080-15 TERMOIL			
16	11007470	SPRING FOR FS400 COVER CHASSIS			
17	9991.168	GLASS SPHERE D.5 MM			
18	U302.003	GALV.NUT HEXAGONAL M4 UNI 5588			
19	11003472	RUBBER X UNIT FRESH-BREW			
20	140320461	OR ORM 0080-20 IN TERMOIL			
21	322000559	WATER FLOW PISTON GREY			
22	129512921	SCREW TCB TORX 10 AB 2,9X13 SHEE			
23	140321462	OR 2018 IN SILICONE			
24	11002603	SPING FOR MEMBRANE			
25	11002625	MEMBRANE			
26	11003471	PIN FOR MEMBRANE FRESH-BREW			
27	11003469	COUNTERPISTON FRESH-BREW			
28	NM01.044	OR ORM 0320-40 IN SILICONE PTFE/			
29	11008362	PERCOLATOR ASS. FOR UNIT TTT			
30	11003529	HOPPER DOSER UNIT FRESH BREW			
31	126836618	SPRING H=28 NEW FOR SCRAPER			
32	129851921	TSP SCREW M3X6 UNI 7688 SS			
33	9161.037	LOWER PERCOLATOR FOR UNIT			
34	11002626	ASS. COFFEE CONTAINER GREY 9 GR.			
35	9161.021.150	KEY FOR BREW UNIT GREY			
36	11007283	BREW UNIT 10GRAMS FRESH BREW			



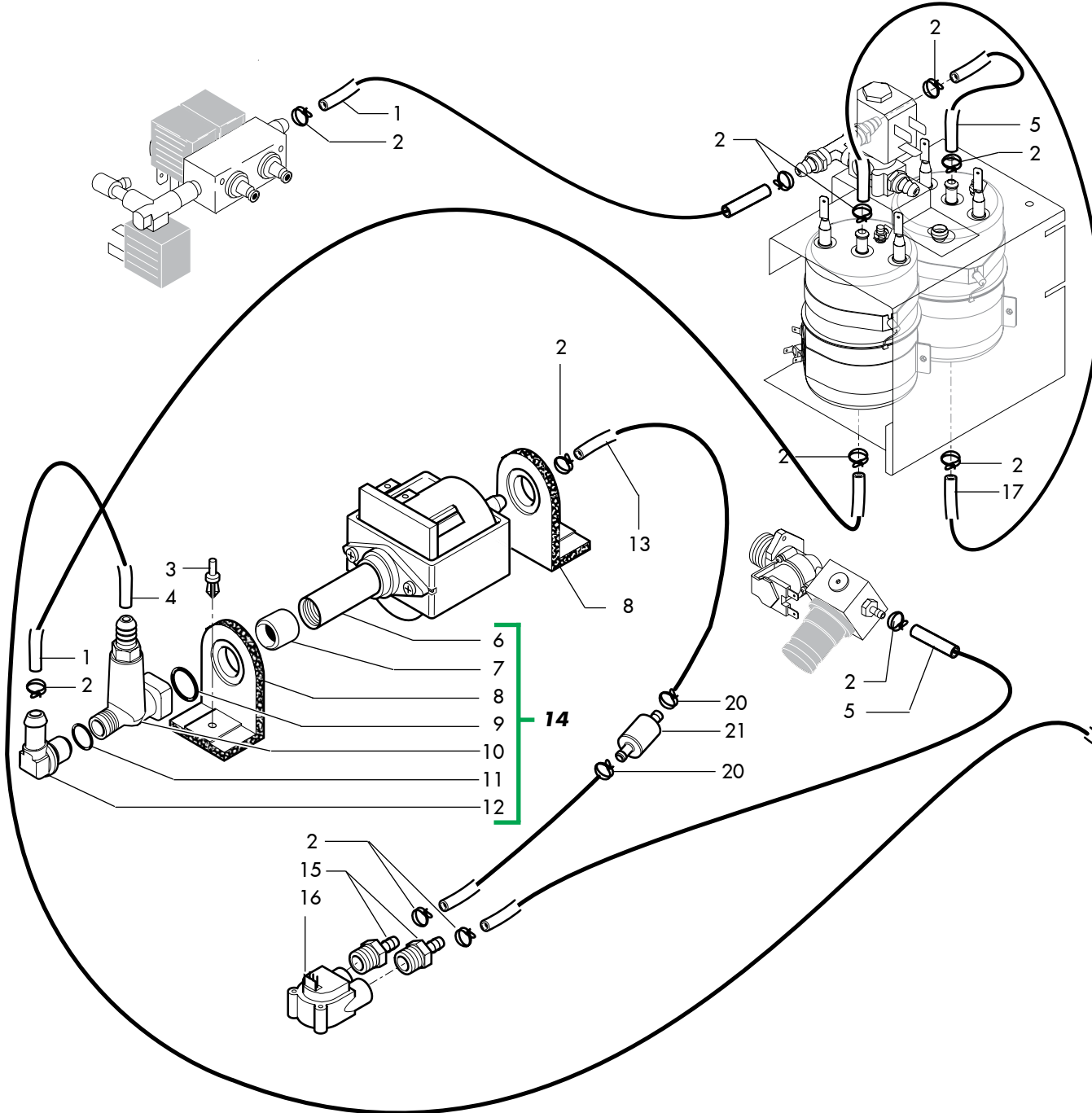
E19021

Pos	Article-Nr.	Description	Pos	Article-Nr.	Description
1	11013312				
2	12001395				
3	11013022				
4	11013945				
5	129573202	SCREW TCB TORX 20 M4X8 AUTOFORMI			
6	11007907	TUB.BOILER V5 SIDE THERMOSTATES			
7	11011341	V4 TUB.BOILER 1300W 230V ASSY.			
8	11005558	THERMOSTAT 190° NC FASTON 90°			
9	12000804	THERMOSTAT 190° 1NT-08L-6067			
10	NM03.013	OR 2,3X15 NBR			
11	11013023				
12	11009589	STEAM PROBE SG650			
13	U127.011	screw TAPT.TCB M5,0X8 DIN 750			
14	11013176	STEAM BOILER PHEDRA CAPP.230V 13			
15	9111.501	INSULATION WASHER			
16	11013311				



E19021

Pos	Article-Nr.	Description	Pos	Article-Nr.	Description
1	11014162	BOILER INOX 230V 1500W PHEDRA IN			
2	U043.028	screw TCBC M3,0X10 UNI 7687 GA			
3	U310.001	GALV.SELF LOCK. NUT M3 UNI 7473			
4	124321102	NTC STRIP LOCK			
5	U302.003	GALV.NUT HEXAGONAL M4 UNI 5588			
6	124390520	BRASS BENT FASTON 45° 6,3X0,8			
7	128310421	WASHER UNI 8842 A4 SS			
8	11008190				
9	NE09.010	THERMOSTAT 135NC FAST. 90+WAS			
10	11008020	STRIP LOCK			
11	145853660				
12	121711020	BUSH FOR TO PRESS SEAL			
13	11012424				
14	NR07.013	STD TOOTHED CONN. M 1/8X06 NICK			
15	NR07.044	STD. CONN. T FFF 1/8 NICK			
16	NR07.001	STANDARD NIPPLO MM 1/8 X1/8 BRA			
17	U005.017	SCREW TE M5,0X12 UNI 5739 G			
18	9111.319.270	KNOB FOR ARM			
19	11013314				
20	U043.007	screw TCBC M3,0X8 UNI 7687 GA			
21	U324.006	NUT M4 FLANGED INDENTED BASE			
22	11013313				
23	U110.002	screw AUT.TCB 3,5X13 DIN 7981			
24	11011054	PIN FOR BOSS D.8			
25	11011579				
26	12001001	ELECTROVALVE 2 WAY 24V DC SG650			



E19021

Pos	Article-Nr.	Description	Pos	Article-Nr.	Description
1	9972.343	SILICONE TUBE FABRIC 5X9 L.95 M			
2	NV99.077	TUBE-TIGHTENING CLAMP D=9.8/10.6			
3	NF11.005	RIVET ITW D.5,5			
4	9972.022	SILICONE TUBR 5X8 L.2MT			
5	9972.342	SILICONE TUBE FABRIC 5X9 L.160M			
6	187721658	ULKA PUMP EP 8 230 VOLT			
7	9071.098	REINFORCEMENT FOR ULKA PUMP			
8	149185850	EATON PUMP SUPPORT 4002012 MAGIC			
9	140321961	OR 2031 IN TERMOIL			
10	11008017	SAFETY VALVE ASS. 3,5 -4 BAR			
11	140324461	OR ORM 0060-20 IN TERMOIL			
12	147922100				
13	147920150	90° INLET PUMP CONNECTOR			
14	11014157				
15	11009215	RUBBER HOLDER FOR FILTER			
16	12000880	DIGMESA PLASTIC PREX TURBINE D.3			
17	9972.344	SILICONE TUBE 5X9 L.290 MM			
18	11011578				
19	U142.008	PANELVIT TSP 3,5X12 DIN 7505 A			